

Online Help



Report Generator Application

077-0087-00

Adapted from Online Help

www.tektronix.com

Copyright © Tektronix. All rights reserved. Licensed software products are owned by Tektronix or its suppliers and are protected by United States copyright laws and international treaty provisions.

Tektronix products are covered by U.S. and foreign patents, issued and pending. Information in this publication supercedes that in all previously published material. Specifications and price change privileges reserved.

TEKTRONIX and TEK are registered trademarks of Tektronix, Inc.

Contacting Tektronix

Tektronix, Inc.
14200 SW Karl Braun Drive or P.O. Box 500
Beaverton, OR 97077 USA

For product information, sales, service, and technical support:

- In North America, call 1-800-833-9200.
- Worldwide, visit www.tektronix.com to find contacts in your area.

Warranty 9(b)

Tektronix warrants that the media on which this software product is furnished and the encoding of the programs on the media will be free from defects in materials and workmanship for a period of three (3) months from the date of shipment. If any such medium or encoding proves defective during the warranty period, Tektronix will provide a replacement in exchange for the defective medium. Except as to the media on which this software product is furnished, this software product is provided "as is" without warranty of any kind, either express or implied. Tektronix does not warrant that the functions contained in this software product will meet Customer's requirements or that the operation of the programs will be uninterrupted or error-free.

In order to obtain service under this warranty, Customer must notify Tektronix of the defect before the expiration of the warranty period. If Tektronix is unable to provide a replacement that is free from defects in materials and workmanship within a reasonable time thereafter, Customer may terminate the license for this software product and return this software product and any associated materials for credit or refund.

THIS WARRANTY IS GIVEN BY TEKTRONIX IN LIEU OF ANY OTHER WARRANTIES, EXPRESS OR IMPLIED. TEKTRONIX AND ITS VENDORS DISCLAIM ANY IMPLIED WARRANTIES OF MERCHANTABILITY OR FITNESS FOR A PARTICULAR PURPOSE. TEKTRONIX' RESPONSIBILITY TO REPLACE DEFECTIVE MEDIA OR REFUND CUSTOMER'S PAYMENT IS THE SOLE AND EXCLUSIVE REMEDY PROVIDED TO THE CUSTOMER FOR BREACH OF THIS WARRANTY. TEKTRONIX AND ITS VENDORS WILL NOT BE LIABLE FOR ANY INDIRECT, SPECIAL, INCIDENTAL, OR CONSEQUENTIAL DAMAGES IRRESPECTIVE OF WHETHER TEKTRONIX OR THE VENDOR HAS ADVANCE NOTICE OF THE POSSIBILITY OF SUCH DAMAGES.

Table of Contents

General Safety Summary	v
Report Generator	1
About the Report Generator.....	1
Starting the Report Generator	1
Steps to set up the Report Generator.....	2
Definitions of User Interface Items.....	3
Application Directories and File Names	3
File Name Extensions	4
Operating the Report Generator.....	5
Create or Edit a Test Template	5
Define or Edit a Report Layout.....	7
Generate, Print or View a Report.....	9
Template Editor	13
About the Template Editor.....	13
The Template Editor Window	15
Default Template Editor Settings.....	16
Using the Template Editor	16
Position Caption.....	17
Edit Caption	17
Change Template Size	18
Change Font.....	19
Align Fields.....	20
Make Same Size.....	20
Bring to Front.....	21
Send to Back	21
Show/Hide Text	21
Position Caption.....	21
Palette List	22
Native Fields	23
Static Text.....	23
Rectangle	23
Line	23
Logo	23
Table	24
Date and Time.....	24

Application Fields	25
Oscilloscope Fields	25
Create Custom Group.....	26
Edit Custom Groups.....	27
Delete Custom Groups	28
Template Editor Menus.....	29
Template Editor: File Menu	30
Template Editor: View Menu.....	31
Template Editor: Object Menu.....	31
Template Editor: Window Menu	32
Template Editor: Help Menu	32
Template Editor: Toolbars	32
Template Editor: Standard Toolbar.....	33
Template Editor: Align or Size Toolbar.....	33
Template Editor: Layout Toolbar.....	34
Template Editor: Action Toolbar	34
Template Editor: Status Bar	34
Report Layout Editor	35
About the Report Layout Editor.....	35
Report Layout Editor Window.....	37
List of Templates Pane.....	38
Report Layout Pane.....	39
Using the Report Layout Editor	40
Define Header and Footer	41
To View a Report.....	43
Change Report Layout	43
Insert Pages	43
Default Report Layout Editor Settings.....	44
Report Layout Editor: Menus.....	44
Report Layout Editor: File Menu	45
Report Layout Editor: Edit Menu	45
Report Layout Editor: View Menu	45
Report Layout Editor: Layout Menu.....	45
Report Layout Editor: Page Menu	46
Report Layout Editor: Help Menu	46
Report Layout Editor: Toolbars	46
Report Layout Editor: Standard Toolbar.....	46
Report Layout Editor: Layout Toolbar	47
Report Layout Editor: Page Toolbar	47
Report Layout Editor: Action Toolbar.....	47
Status Bar	48
Report Layout Editor: Adding a Template to an existing report.....	48

Report Viewer.....	49
About the Report Viewer	49
Report Viewer Window	50
Using the Report Viewer	50
Select All.....	51
Bring to Front.....	51
Send to Back	51
Show/Hide Text	51
Configure Page	51
Go To Page	52
Export to RTF	52
To Edit Text.....	52
To Find text.....	53
To Replace text	54
View a report	54
Align Fields.....	55
Report Viewer: Change Font	55
Report Viewer: Make Same Size.....	55
Report Viewer: Menus.....	55
Report Viewer: File Menu	56
Report Viewer: View Menu.....	56
Report Viewer: Object Menu.....	57
Report Viewer: Help Menu.....	57
Report Viewer: Toolbars.....	57
Report Viewer: Standard Toolbar.....	58
Report Viewer: Align/Size Bar	59
Report Viewer: Separators.....	59
Report Viewer: Status Bar	59
Appendix	61
Shortcut Keys.....	61
Report Generator Error Codes	62
Virtual Keyboard	66
Index	67

General Safety Summary

Review the following safety precautions to avoid injury and prevent damage to this product or any products connected to it. To avoid potential hazards, use this product only as specified.

Only qualified personnel should perform service procedures.

While using this product, you may need to access other parts of the system. Read the General Safety Summary in other system manuals for warnings and cautions related to operating the system.

To Avoid Fire or Personal Injury:

Connect and Disconnect Properly: Do not connect or disconnect probes or test leads while they are connected to a voltage source.

Observe All Terminal Ratings: To avoid fire or shock hazard, observe all ratings and markings on the product. Consult the product manual for further ratings information before making connections to the product.

Do Not Operate With Suspected Failures: If you suspect there is damage to this product, have it inspected by qualified service personnel.

Symbols and Terms: The following terms and symbols may appear in the online help.



WARNING. *Warning statements identify conditions or practices that could result in injury or loss of life.*



CAUTION. *Caution statements identify conditions or practices that could result in damage to this product or other property.*

Terms on the Product: The following terms may appear on the product:

- DANGER indicates an injury hazard immediately accessible as you read the marking.
- WARNING indicates an injury hazard not immediately accessible as you read the marking.
- CAUTION indicates a hazard to property including the product.

Symbols on the Product: The following symbol(s) may appear in the product:

 CAUTION
Refer to Help

Report Generator

About the Report Generator

The Report Generator application allows you to generate and print reports directly from supported oscilloscope applications. The Report Generator is integrated with applications and enhances an application's capabilities by simplifying the process of creating and maintaining reports.

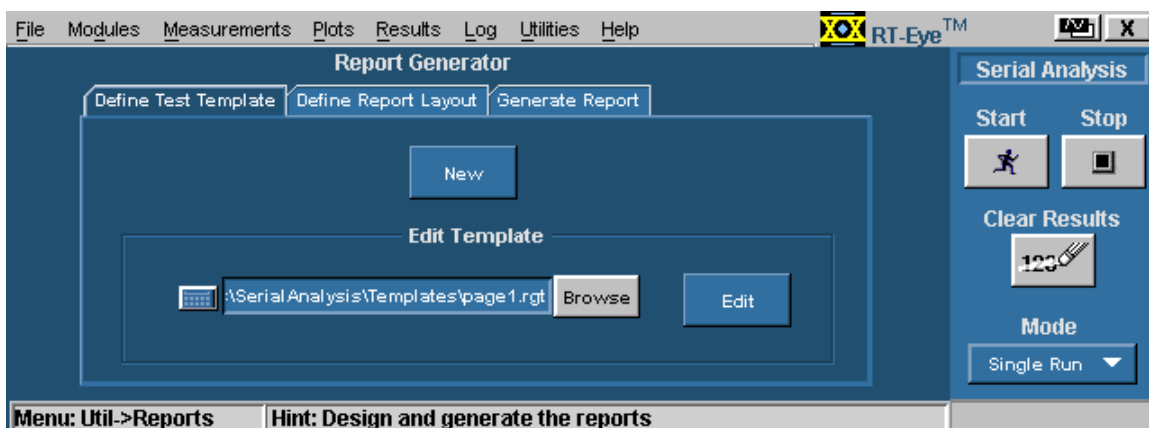
The Report Generator application includes the following features:

- Automates the process of compiling the test results
- Automates the process of generating the reports
- Sets up the layout using the factory default templates or user defined templates
- Creates custom templates
- Saves files in the custom file formats such as .rgt, .rpl, or .rpt
- Exports files in .rtf file format
- Prints Template or Report to a file

Starting the Report Generator

You can generate and print reports directly from the oscilloscope. To start the Report Generator, go to Utilities > Reports.

Note: The screenshots provided here are of an application that uses Report Generator and may vary from the actual application that uses it.



Steps to set up the Report Generator

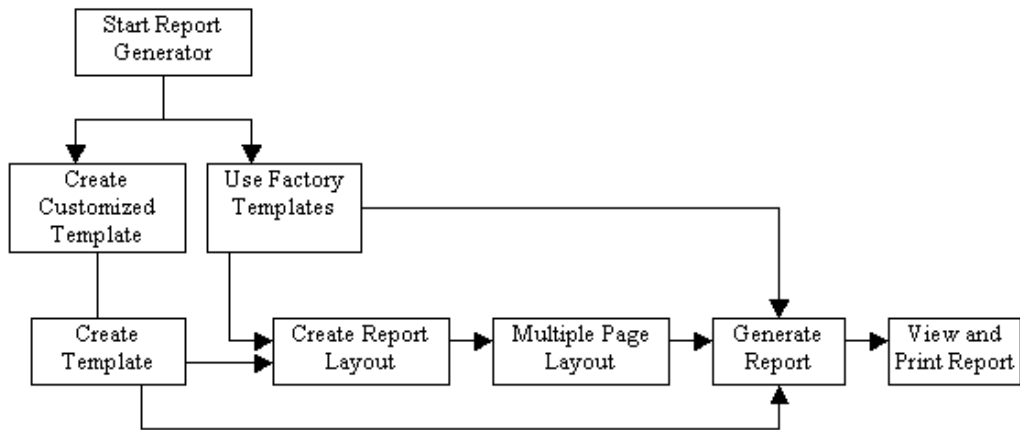


Figure 1: Steps to set up the Report Generator

Definitions of User Interface Items

Table 1: User interface items and their definitions

Item	Description
Test Template	A factory template or a test template defined by the user with fields pertaining to the test desired.
Report Layout	The layout for the test templates. This is the blueprint for report generation.
Palette	The palette list is a tree of data items or "Fields" that can be dragged and dropped on to the templates to design the reports.
Native Fields	A part of the palette list that contains parameters to create the report.
Oscilloscope Fields	Groups of oscilloscope data or parameter fields
Custom Groups	Group of fields created by the user.
Client Area	The area in the template editor into which you can drag and drop items from the palette list.
Tile	The area in the Report layout that contains the template. The report layout can be divided into four tiles.
Pane	The Report Layout editor window is divided into two areas. These areas are referred to as panes.
Separator	The template separators in report viewer. You can hide or show the separators.
Report	The result of the test template populated with data.
Grid Lines	The lines that appear on the test template that helps position the fields.

Application Directories and File Names

Table 2: Application Directories

Directory	Action
C:\TekApplications\ <applicationname>reportgenerator\modules\<modulename>\templates< td=""> <td>Stores the default Report Generator templates.</td> </applicationname>reportgenerator\modules\<modulename>\templates<>	Stores the default Report Generator templates.
C:\TekApplications\ <applicationname>\reportgenerator\modules\<modulename>\reports< td=""> <td>Stores the reports.</td> </applicationname>\reportgenerator\modules\<modulename>\reports<>	Stores the reports.
C:\TekApplications\ <applicationname>\reportgenerator\modules\<modulename>\layouts< td=""> <td>Stores the report layouts.</td> </applicationname>\reportgenerator\modules\<modulename>\layouts<>	Stores the report layouts.

The <modulename> can be SerialAnalysis, InfiniBand, or PCIeExpress.

The <Applicationname> can be TDSPWR3, TDSHT3, TDSET3, TDSRT-Eye, or DPOPWR.

File Name Extensions

Table 3: File name extensions and their descriptions

Extension	Description
.rgt	Customized Report Generation file format indicates the generated template.
.rpl	Customized Report Generation file format indicates the defined layout files.
.rpt	Customized Report Generation file format indicates the report files.
.rtf	File format that uses a "rich text format".
.rgp	Custom report group format.

Operating the Report Generator

Create or Edit a Test Template

To create a new test template or edit an existing template, go to Utilities > Reports > Define Test Template.

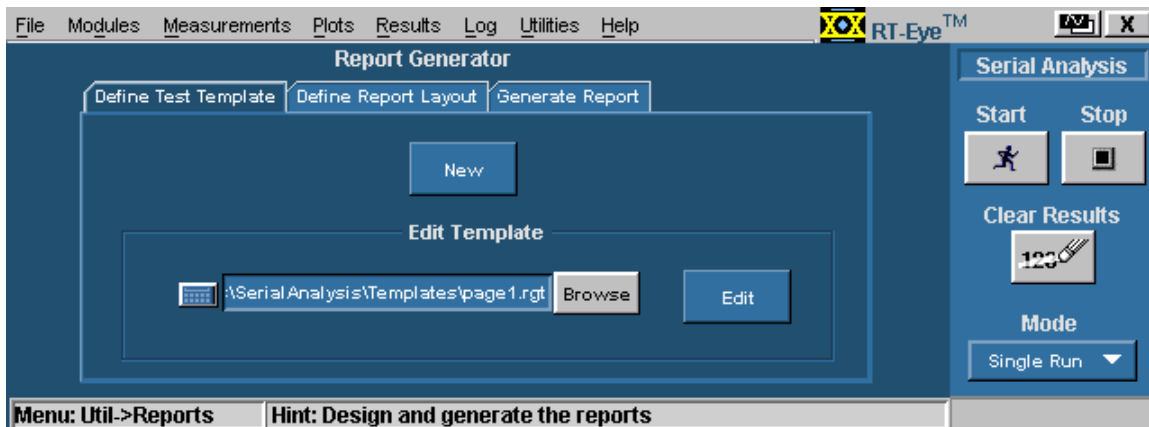


Figure 2: Creating and editing a test template

To create a new test template:

1. Under the Define Test Template tab, select New. The Template Editor window appears with an empty client area.
2. Create the template using the Palette list.
3. After you have completed creating a new test template, select Done.

See Template Editor for more information about Template Editor.

To edit an existing test template:

1. Under the Define Test Template tab, select Browse.

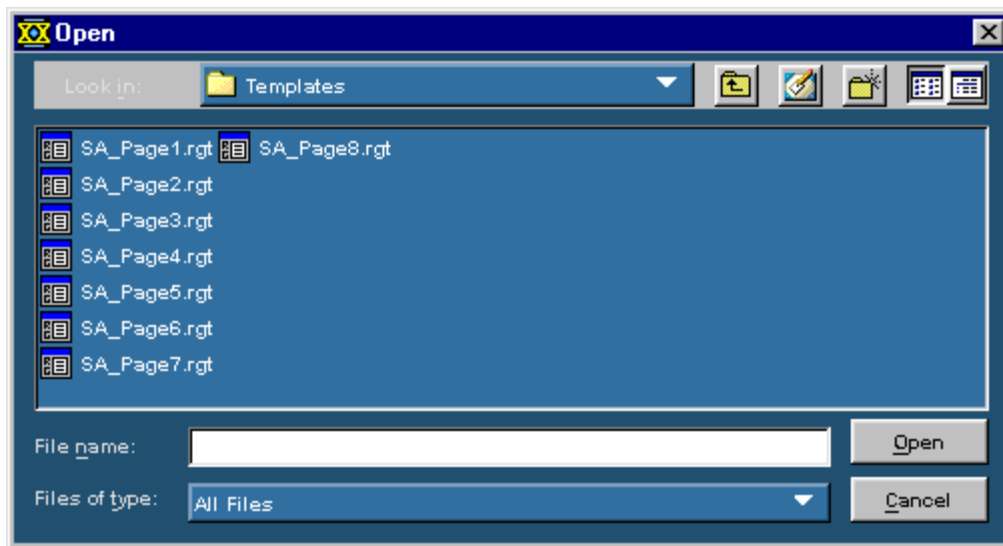


Figure 3: Selecting a test template

2. The open window displays the existing factory default templates and customized templates in
C:\TekApplications\\ReportGenerator\modules\\Templates, where "modulename" can be SerialAnalysis, InfiniBand, or PCIExpress, and the <Applicationname> can be TDSPWR3, TDSHT3, TDSET3, TDSRT-Eye or DPOPWR.
3. Select the template that you want to use.
4. Select Open.
5. In the Define Test Template tab, select Edit Template. The Template Editor window appears with the client area displaying the selected template.
6. Edit the template using the Palette list.
7. After you have completed editing an existing test template, select Done.

See Template Editor for more information about Template Editor.

Define or Edit a Report Layout

To create a new report layout or edit an existing report layout go to Utilities > Reports > Define Report Layout.

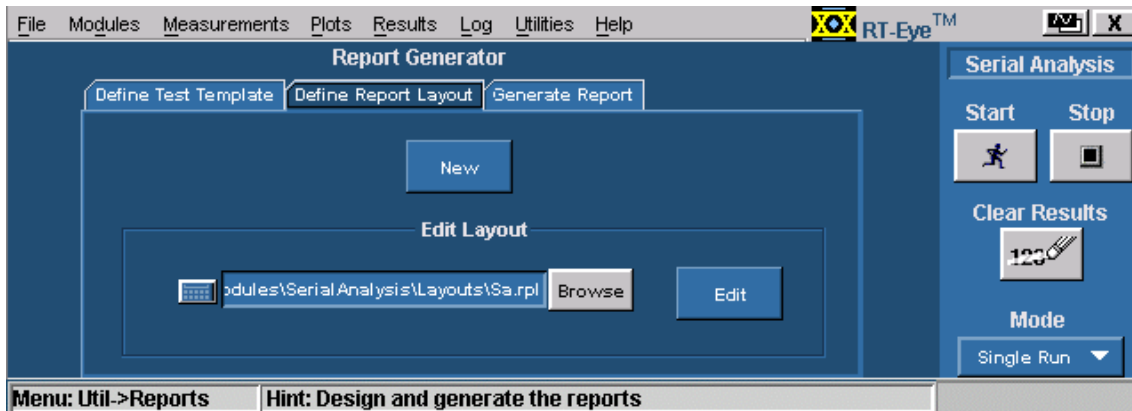


Figure 4: Defining or editing a report layout

To create a new report layout:

1. Under the Define Report Layout tab, select New. The Report Layout Editor window appears with an empty report layout area.
2. Create the report by defining the report layout and dragging and dropping the templates to the report layout area.
3. After you have completed creating a new report layout, select Done.

See Report Layout Editor for more information about the Report Layout Editor.

To edit an existing report layout:

1. Under the Define Report Layout tab, select Browse.

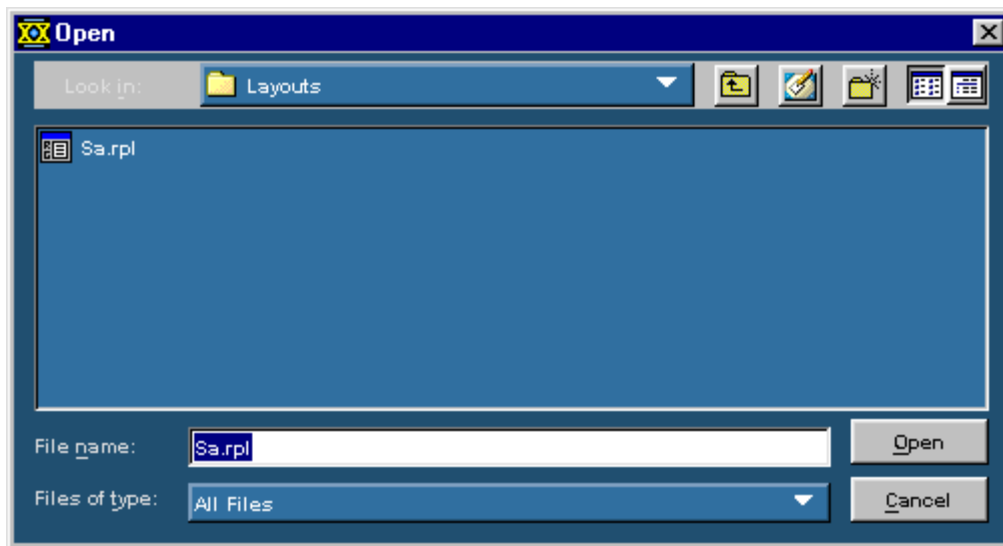


Figure 5: Selecting a report layout

2. The Open window displays the existing factory default report layout and customized report layouts in
C:\TekApplications\\ReportGenerator\modules\\Layouts, where the "modulename" can be SerialAnalysis, InfiniBand, or PCIExpress and <Applicationname> can be TDSWPR3, TDSHT3, TDSET3, TDSRT-Eye, or DPOPWR.
 3. Select the report layout that you want to use.
 4. Select Open.
 5. In the Define Report Layout tab, select Edit Layout.
 6. The Report Layout Editor window appears with the report layout area displaying the customized report layout and the selected template files.
 7. Edit the report layout using the List of Templates and defining the Report Layout.
 8. After you have completed editing an existing report layout, select Done.
- See Report Layout Editor for more information about the Report Layout Editor.

Generate, Print or View a Report

To generate, print, or view a report, go to Utilities > Reports > Generate Report.

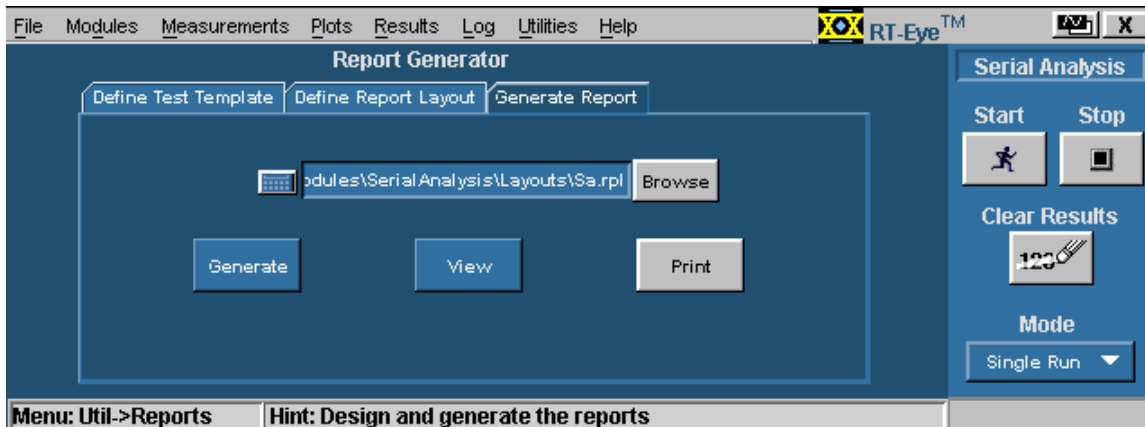


Figure 6: Generating, printing and viewing a report

To generate a report:

1. Under the Generate Report tab, select Browse.

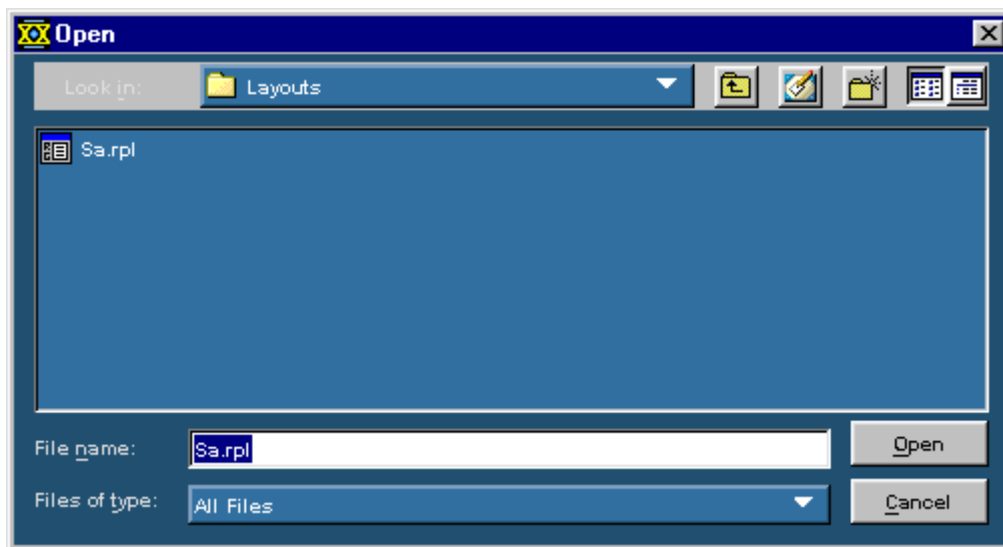


Figure 7: Selecting a report layout

2. The Open window displays the existing reports in C:\TekApplications\- 3. Select the report layout that you want to generate.

4. Select Open.

To print a report:

1. Under the Generate Report tab, select Browse.

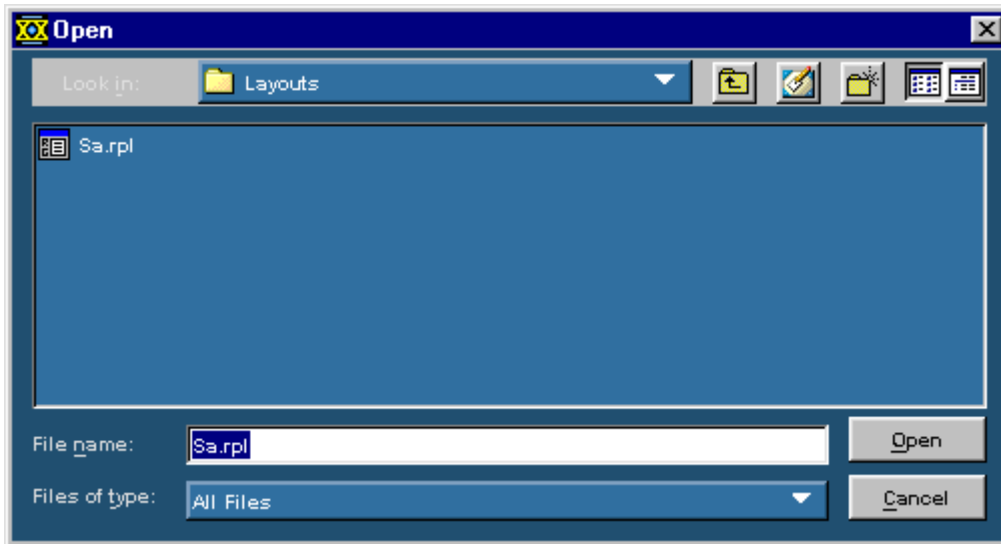


Figure 8: Selecting a report

2. The Open window displays the existing reports in C:\TekApplications\- 3. Select the report that you want to print and select Open. The Report Viewer displays the selected report with current data from the application.
 - If the page settings do not match the page settings for the Report, a Page Size Mismatch message box displays a message — The current page settings do not match the page settings for the Report. Do you want to continue?
 - Select Yes to continue. If the printer is installed, the report is printed.
 - Select No to not send the report to the printer.

To view a report:

1. Select File > Open. The Open dialog box displays all the reports in the default directory
C:\TekApplications<Applicationname>\ReportGenerator\modules\<module name>\Reports, where "modulename" can be SerialAnalysis, InfiniBand, or PCIExpress and the <Applicationname> can be TDSPWR3, TDSHT3, TDSET3, TDSRT-Eye or DPOPWR.
2. Select the report that you want to view and select Open.

Note: You can also use these steps to open a report or a test template.

Template Editor

About the Template Editor

The Report Generator provides a number of factory default test templates. The Template editor allows you to create custom test templates.

Note: The factory default test templates are specific to applications.

You can use the Template Editor to do the following tasks:

- Create test templates
- Edit test templates in the .rgt format (report generator template)
- Cut, copy, and paste items across templates
- Save the test templates that you created
- Reuse the test templates in other reports

When the report is generated, the application fills in the fields of the template using the acquired data from the oscilloscope.

The Template Editor has a palette list that displays the following groups of fields: the Application Fields, Oscilloscope Fields, and Native Fields. The template editor provides you with the option to create custom groups; these groups once created, appear in the palette list. The fields are listed according to the group selected. You can use these fields to design and create a template.

You can place the fields in the template, and then move and size them appropriately. Multiple fields can be selected and placed in the template. You can select more than one field and make the following changes: cut, copy, paste, align, delete, size, edit font, and change the caption of the fields.

Once a template is defined and saved, either select Done to close the template editor, or use the Layout icon to directly go to the report layout editor.

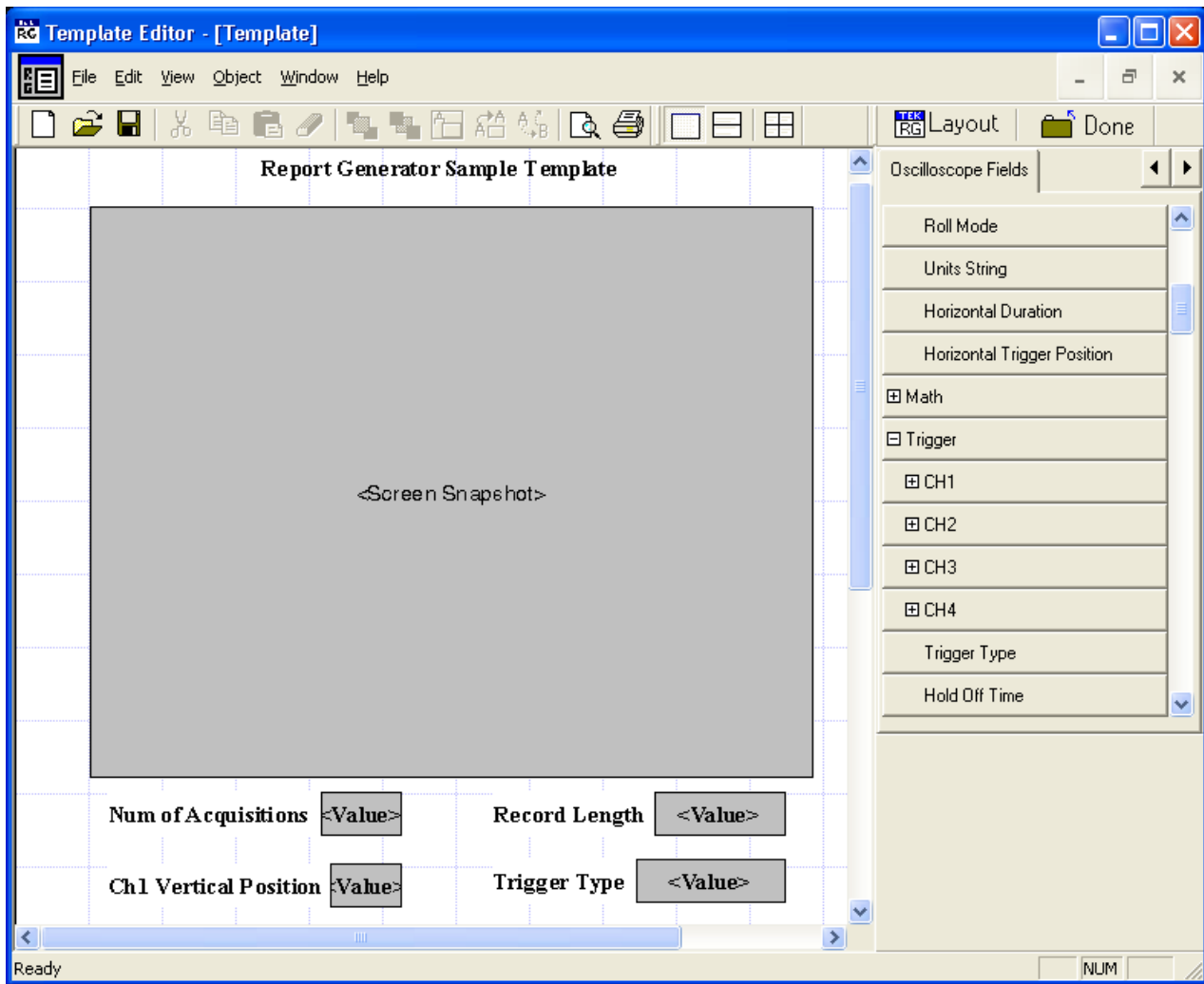


Figure 9: The Template Editor

The Template Editor Window

The Template Editor window contains a menu bar, a toolbar, a client area, a palette list, and a status bar. When you select the New Template button in your application, the Report Generator removes test templates from the client area. When you select the Edit Template button, the Report Generator displays the selected template in the client area.

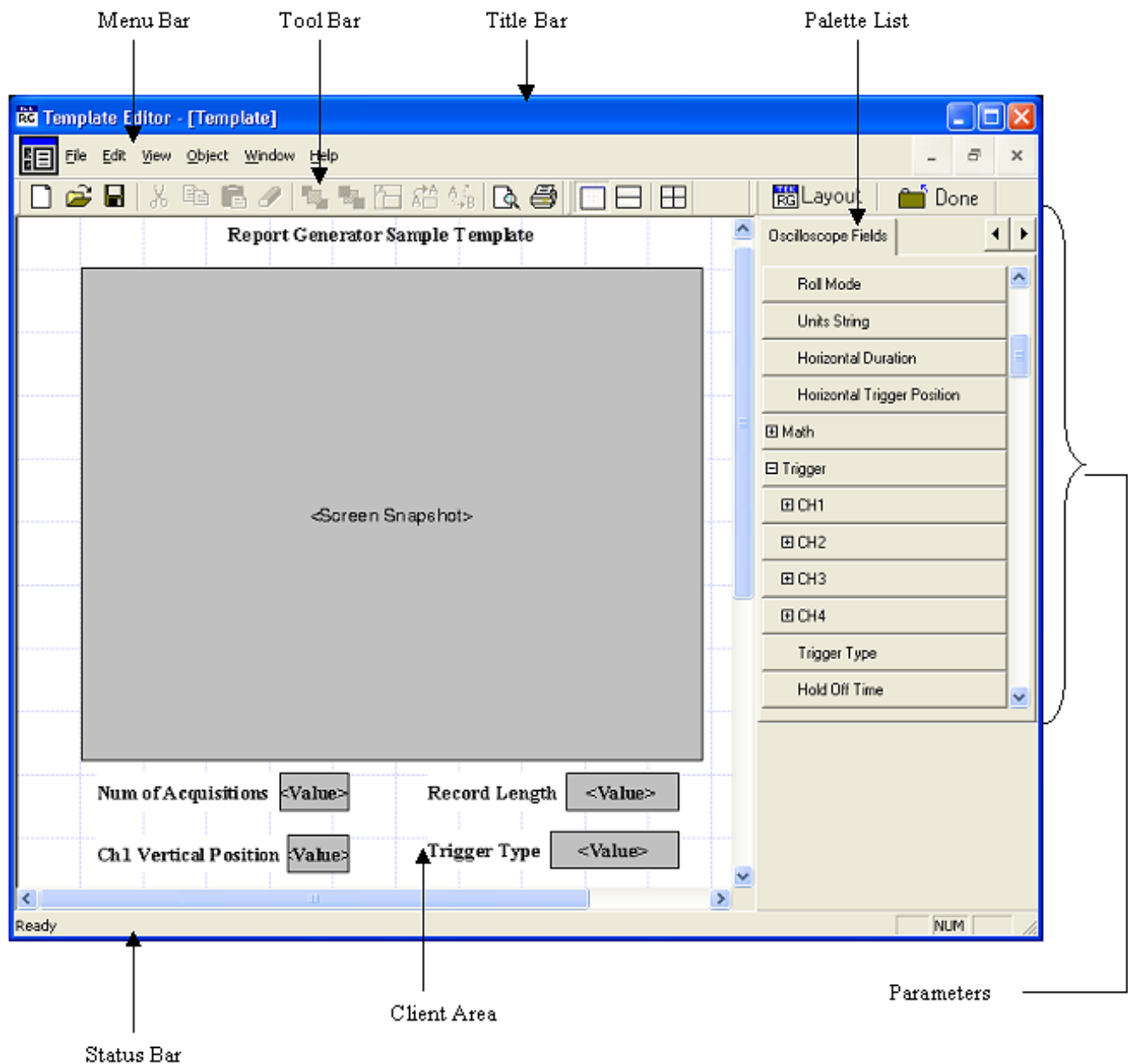


Figure 10: The Template Editor window

In the template editor, you can select a field and right-click on it. This brings up a context menu for the field with the following items: Cut, Copy, Delete, Bring To Front, Send To Back, Hide Text, Position Caption on Top, Edit Caption, Change Font, Align Fields, and Make Same Size.

Default Template Editor Settings

Table 4: Default setting for the Template Editor

Parameter	Default setting	Option
Page Size	8.5x11 inches.	Change Template Size
Palette List	Displays application fields by default. If there are no application fields, the oscilloscope fields are displayed.	None
Static Text	Inserts static text.	Static Text
Fields	The default size of the field dragged into the template is 200x300 pixels.	None

Using the Template Editor

To create a new template, follow these steps:

1. From the Palette List drag and drop the fields that you want in the report.
2. If you drag and drop a group from the Palette List, all the fields within the group are placed in the test template.
3. Organize the fields, as you want them to appear in the report.
4. After you have finished creating the template, select File > Save.

To edit an existing template:

1. Open an existing template using Browse > Open. Select the template to edit.
2. Organize the fields, as you want them to appear in the report.
3. From the Palette List, drag and drop the fields that you want in the report.
4. If you drag and drop a group from the Palette List, all the fields within the group are placed in the test template.
5. Organize the fields, as you want them to appear in the report.

6. After you have finished editing the template, select File > Save.

Position Caption

You can position the caption of the selected fields on either the left or on the top of the field. To position caption:

Go to Object > Position Caption to the Left, or on Top.

Edit Caption

You can edit the caption of the selected parameter or object. To edit the caption go to Object > Edit Caption.

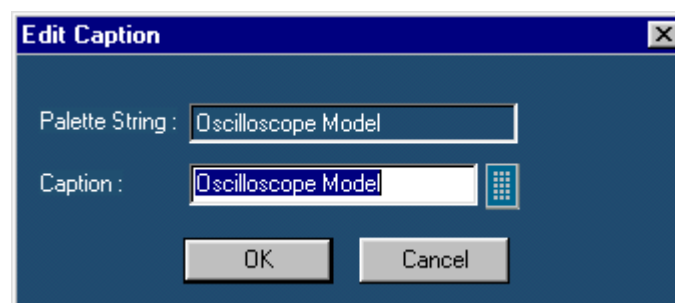



Figure 11: Editing a caption

1. Select the caption you want to edit.
2. Select Edit Caption.
3. In the Edit Caption dialog box, select  to enter the caption using the Virtual Keyboard. You can also type in the new caption.
4. Select OK.

Change Template Size

To change template size:

1. Go to Edit > Change Template Size.

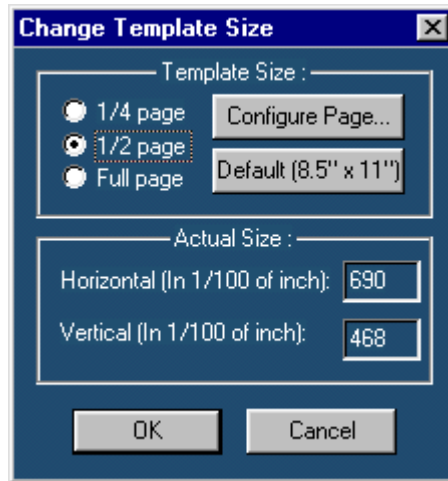


Figure 12: Changing the template size

2. In the Change Template dialog box, select the Template Size as 1/4 page, 1/2 page, or Full page. If the printer is not available, select the Page Size as Default (8.5" x 11"); otherwise, select Configure Page.

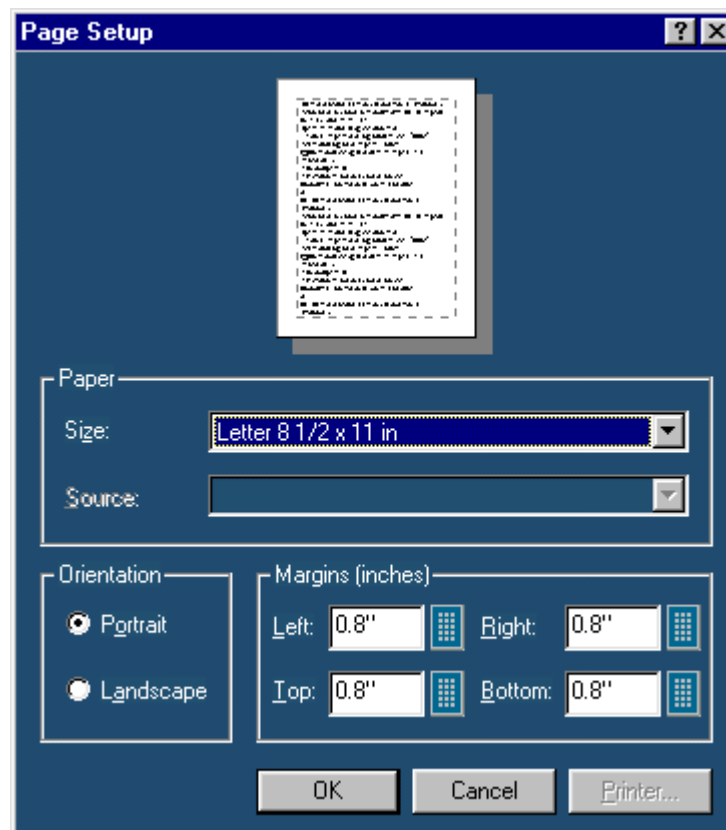


Figure 13: Setting up the page

3. In Page Setup dialog box, select the paper size, source, orientation, and margins.
4. Select OK to return to Change Template Size dialog box.
5. Select OK.

Note: Do not reduce the template size beyond the content filled in the template. You may lose information.

Change Font

You can change the font used for the selected field or fields in the template. To change the font:

1. Select the fields or fields in the test template.
2. Go to Object > Change Font or right click the field to display the options.

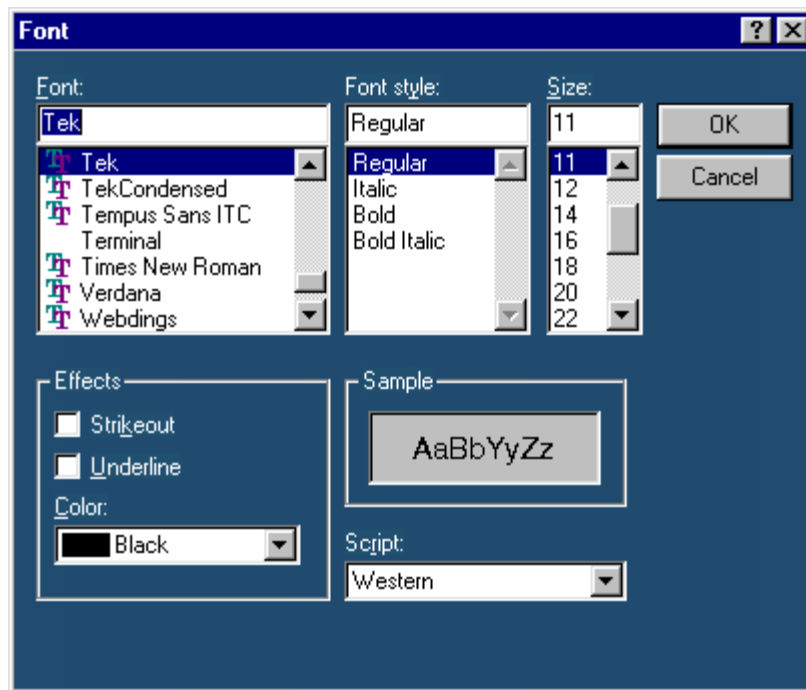


Figure 14: Changing the font

3. In the Font dialog box, choose the font, font style, size, effects, and script.
4. Select OK.

Align Fields

You can align the text displayed in fields to the top, bottom, left, or right of the field. To align text in fields, go to Object > Align Fields.

1. Select the fields in the test template.
2. Select Object > Align Fields > Top, Bottom, Left, or Right to align the field text accordingly.

Make Same Size

To make two or more fields of the same size, go to Object > Make Same Size. Select one field as the dominant field to which the other fields will be sized.

1. You can set the selected fields to same height, width, or both.
2. Select the fields in the test template.
3. Select Object > Make Same Size > Height, Width, or Both to make the selected fields the same size.

Bring to Front

You can bring the selected fields to the front. To bring to front, go to Object > Bring To Front.

Send to Back

You can send the selected fields to the back. To send to back, go to Object > Send To Back.

Show/Hide Text

You can show or hide the captions for the selected fields. Go to Object > Show/Hide Text.

Position Caption

You can position the caption of the selected fields on either the left or on the top of the field. To position caption text, go to Object > Position Caption to the Left, or on Top.

Palette List

To view the palette list, select View > Palette Toolbar.

The palette list is a list of items or "Fields" that can be dragged and dropped on to the templates to design the reports.

The Palette list includes the following categories of fields:

- Native Fields; lists fields used mainly to enhance the appearance of the report, such as Line, Rectangle, and Date.
- <Application> Fields; fields related to the application. The <Application> is replaced with the name of the application from which you opened Report Generator.
- Oscilloscope Fields: groups of fields related to the data acquired from the oscilloscope.
- Custom Groups; lists fields for new groups not included with the base Report Generator application.

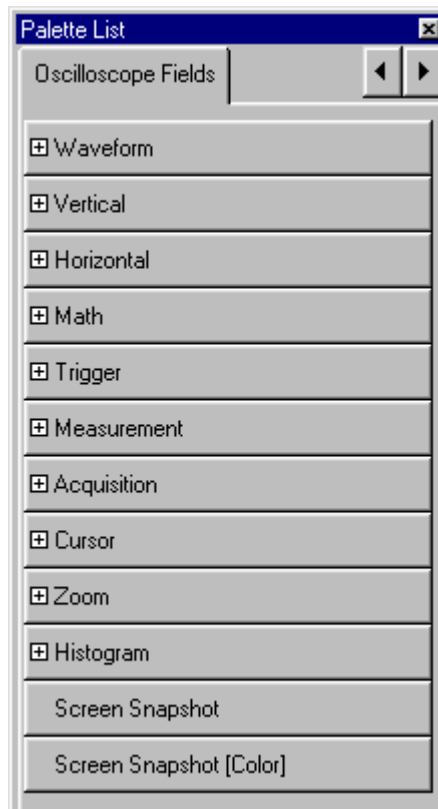


Figure 15: Palette List

The fields often contain a hierarchy. For example, a "Horizontal" field will have subordinate fields such as Position, Scale, and so on. If a Field has subordinate fields under it, a + (plus) symbol will precede the field name in the palette list.

Native Fields

You can enhance the report using the following parameters from the Native fields Static Text, Rectangle, Line, Logo, Table, Date, and Time.

You can drag any of the fields from the Native field and drop it in the test template.

Static Text

1. From the Native fields, drag and drop the static text field.

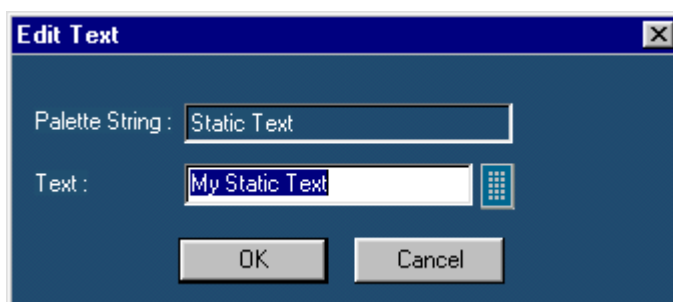


Figure 16: Editing text

2. In the Edit Text dialog box, select the virtual keyboard
3. Enter the static text.
4. Select OK.

Rectangle

From the Native Fields, drag and drop the Rectangle object into the test template.

The black squares that appear at the corners of the rectangle allow you to change the rectangle size.

Line

From the Native Fields, drag and drop the Line object into the test template.

The black squares that appear at the corners of the line allow you to change the line size.

Logo

1. From the Native Fields, drag and drop the Logo field into the test template.

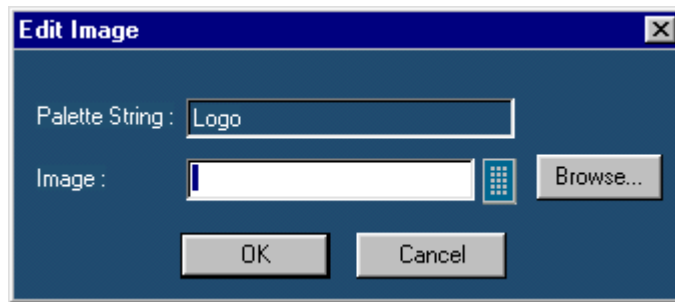



Figure 17: Editing an image

2. In the Edit Image dialog box,
 - Select . In the Virtual Keyboard enter the path and filename and select Enter.
 - Or
 - Select Browse to navigate to the location of the logo graphic image.
3. Select OK.

Table

1. From the Native Fields, drag and drop the table field into the test template.

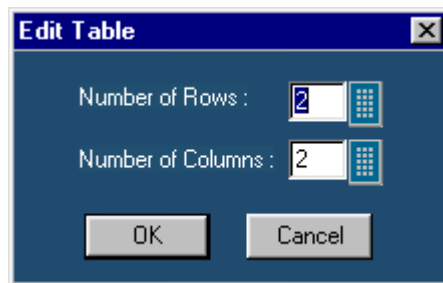



Figure 18: Editing a table

2. In the Edit Table dialog box, you can select the number of rows and columns.
3. Select  next to Number of Rows and Number of Columns to open the Virtual Keypad.
4. In the Virtual Keypad, enter the number and select Enter.
5. Select OK.

Date and Time

From the Native fields, drag and drop the Date and Time field. The Date and Time are taken from the oscilloscope system information at the time the report is generated.

Application Fields

These fields are unique for each application. When you select the applications field tab, a list appears with the names of the currently available applications.

Oscilloscope Fields

These oscilloscope fields are grouped into the following subgroups:

- **Waveform Group:** The Waveform group has the entire active live channels and independent channels (only CH1 to CH4) waveforms in both jpeg and bmp. These waveforms are generated to smoothen out the stair-step effect seen on the display.
- **Vertical Group:** The Vertical group has all vertical related fields such as the vertical scale, position, offset, and others.
- **Horizontal Group:** The Horizontal group has all horizontal related fields such as the horizontal divisions, scale, record length, position, sample rate, and others.
- **Math Group:** The Math group has all the math related fields such as the math definition for a specified math channel, magnitude, spectral gate, spectral phase, spectral window, spectral frequencies of the math channel, and others.
- **Trigger Group:** The Trigger group has all trigger related fields such as the trigger type, mode, level, and various fields related to different trigger types.
- **Measurement Group:** The Measurement group has all the measurements such as the eight automated measurements and the immediate measurements.
- **Acquisition Group:** The Acquisition group has all acquisition related fields such as the acquisition mode, acquisition state, repetitive mode, fast acquisition mode, and others.
- **Cursor Group:** The Cursor group has all the cursor related fields such as the cursor mode, source, state and type of the cursor, H Bars, V Bars, and others.
- **Zoom Group:** The Zoom group has all zoom related fields such as the zoom horizontal position, horizontal scale, and others.
- **Histogram Group:** The Histogram group has all histogram fields such as the coordinates of the histogram box, mode, size, source, and others.
- **Screen snapshot:** The Screen Snapshot group has two variations: one in color and the other in black-and-white. For these screenshots, the attributes are graticule, ink-saver, and jpeg.

Create Custom Group

You can create custom groups using fields from the Palette List. To create custom groups:

1. Go to Edit > Create Custom Group.

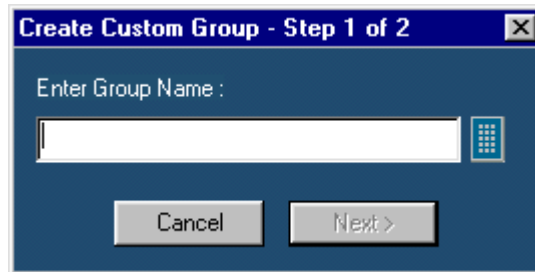



Figure 19: Creating a custom group, step 1

2. In the Create Custom Group dialog box, enter the group name. You can enter the group name using the Virtual Keyboard .
3. Select Next. The Select Fields dialog box displays all the fields of the Palette List.
4. Select fields in the Available Groups and Fields: area to add to the custom group.

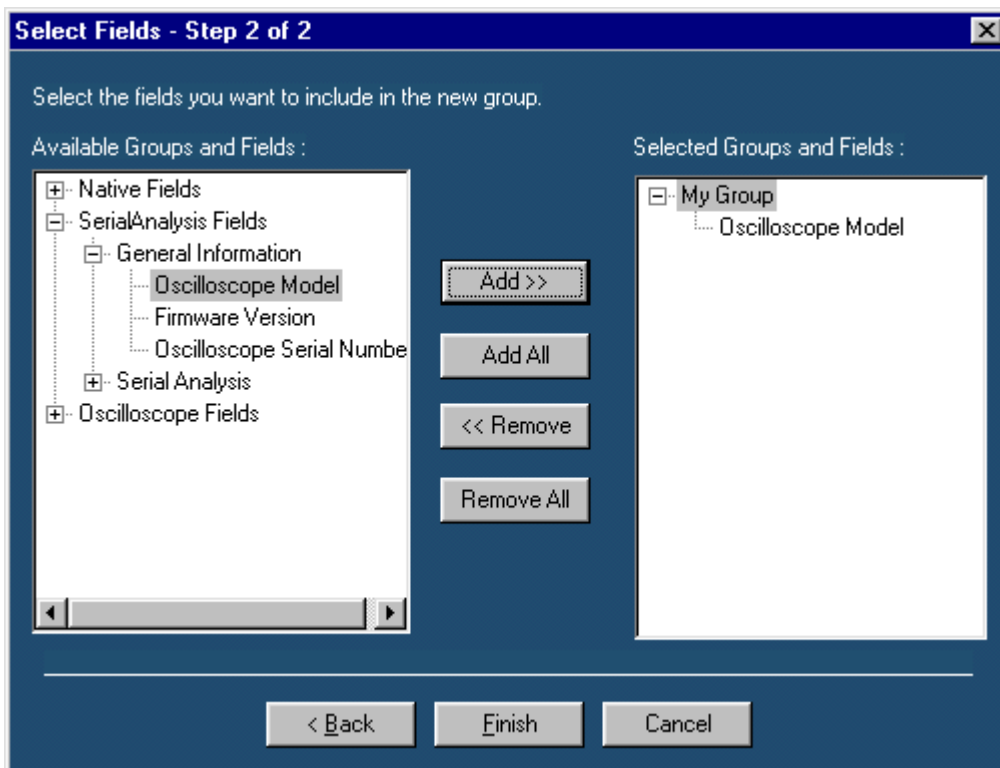


Figure 20: Creating a custom group, step 2

5. Use Add>> to add selected fields to the new group. Use **Add All** to add all available fields to the new group.
6. Use <<Remove to remove selected fields from the selected group. Use **Remove All** to remove all the fields from the selected group.
7. Select Finish.

Edit Custom Groups

To edit custom groups:

1. Go to Edit > Edit Custom Group.

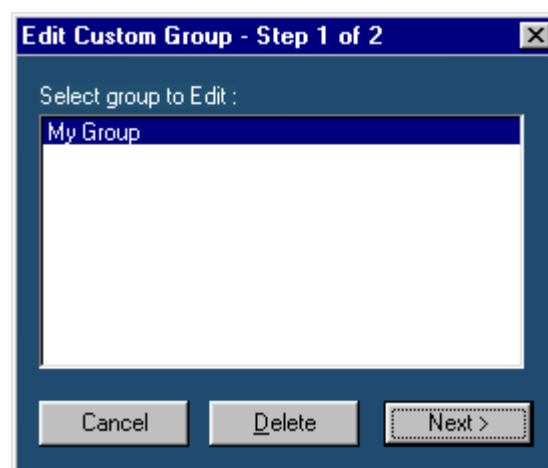


Figure 21: Editing custom groups, step 1

2. In the Edit Custom Group dialog box, select a group to edit.
3. Select Next.

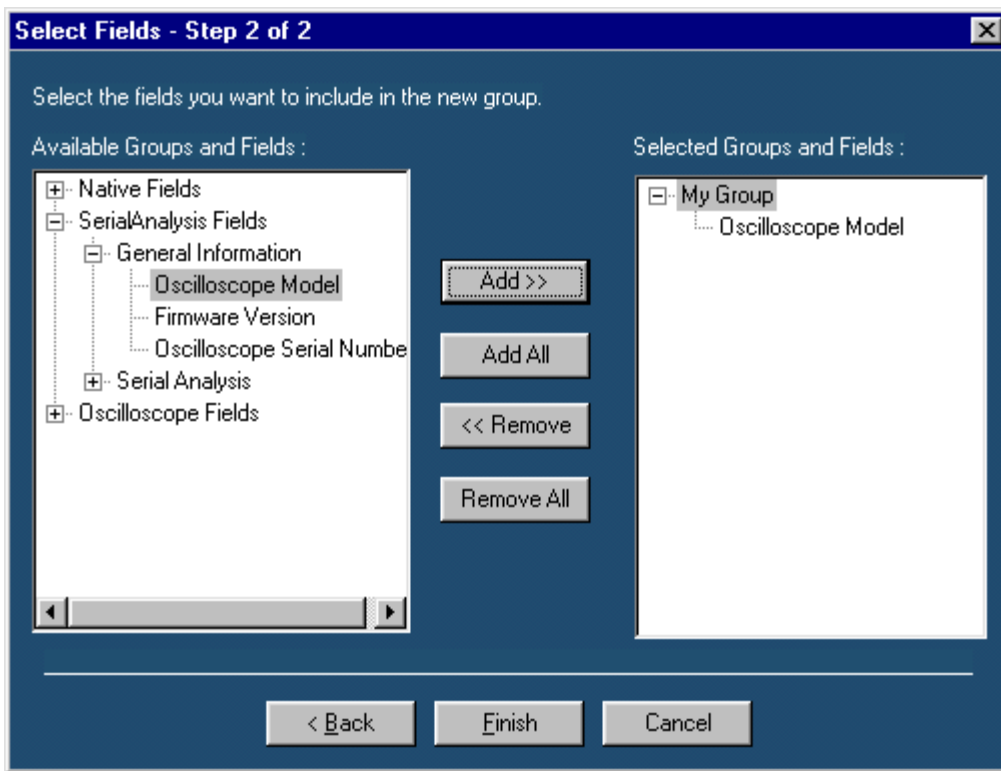


Figure 22: Editing custom groups, step 2

4. Use Add>> to add selected fields to the new group. Use Add All to add all available fields to the new group.
5. Use <<Remove to remove selected fields form the selected group. Use Remove All to remove all the fields from the selected group.
6. Select Finish.

Delete Custom Groups

To delete custom groups:

1. Go to Edit > Edit Custom Group.

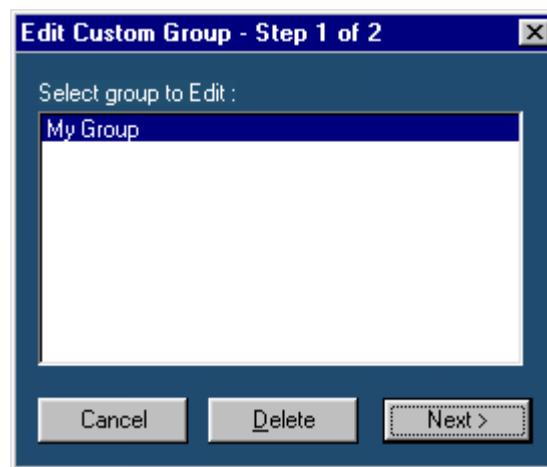


Figure 23: Deleting custom groups

2. In Edit Custom Group dialog box, select a group to delete.
3. Select Delete. A message box appears asking you to confirm your choice.
4. Select Yes to delete.

Template Editor Menus

The menu bar has the following menus.

- File
- Edit
- View
- Object
- Window
- Help

Template Editor: File Menu

Table 5: File menu options and their functions

Menu	Function
New	Creates a new template.
Open	Opens a template.
Close	Closes the template.
Save	Saves changes to the file.
Save As	Saves the template as a different file using the save as dialog box.
Print	Prints all or part of the template.
Print Preview	Displays a sample view of the template.
List of Recent Templates	Opens a previously (recently) opened template.
Exit	Closes the template editor.

Template Editor: Edit Menu

The available Edit menu selections depend on whether a template is active or not. In other words, the client area is empty or has a template open.

Table 6: Edit menu options and their functions

Menu	Function
Cut	Cuts the selected fields.
Copy	Copies the selected fields.
Paste	Pastes the clipboard content.
Delete	Deletes the selected fields.
Select All	Selects all fields.
Create Custom Groups	Creates a custom group.
Edit Custom Groups	Edits a custom group.
Change Template Size	Changes the template size.
Find	Finds the data matching the search criteria.
Replace	Replaces the data matching the search criteria with a specified data.

Template Editor: View Menu

Table 7: View menu options and their functions

Menu	Function
Tool Bar	Displays/Hides the toolbars selected such as Standard, Align, Size, Layout, and Action.
Status Bar	Displays/Hides the Status bar.
Palette Bar	Displays/Hides the Palette bar.
Grid Lines	Displays/Hides the Grid Lines in the client area.

Template Editor: Object Menu

The available object menu selections depend on whether a parameter in the client area is selected or not.

Table 8: Object menu options and their functions

Menu	Function
Bring to Front	Brings the selected fields to the front.
Send to Back	Sends the selected fields to the back.
Hide Text/Show Text	Shows or hides the caption of the selected parameter.
Position Text on top/to the left	Allows you to change the font of the selected parameter or the caption using the change font dialog box.
Edit Caption	Allows you to edit the caption of the selected parameter.
Change Font	Allows you to change the font of the selected parameter or the caption using the Change Font dialog box.
Align Fields	Aligns fields to top, bottom, left, or right.
Make Same Size	Resizes the selected objects to the same size by height, width, or both.

Template Editor: Window Menu

Table 9: Window menu options and their functions

Menu	Function
New Window	Opens a new window duplicating the current active window.
Cascade	Arranges the open templates in the client area from the upper, left side to the lower right side so that they overlap one another.
Tile	Arranges the open templates horizontally and vertically in the application client area without overlapping.
Arrange Icons	Positions the icons of any templates you have minimized to the bottom-left of the window.
List of open Templates	Allows you to display another open template.

Template Editor: Help Menu

Table 10: Help menu options and their functions

Menu	Function
Help Topics	Displays the online help.
About Template Editor	Displays Version and Copyright information.

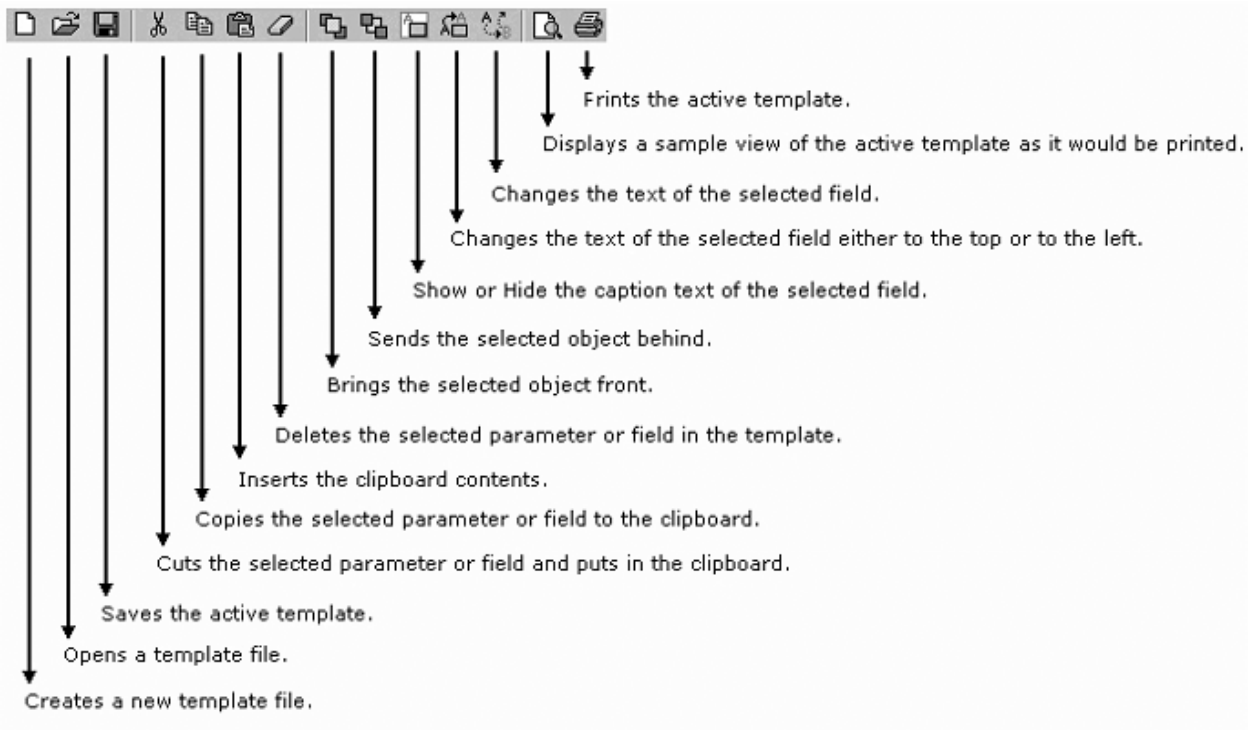
Template Editor: Toolbars

You can choose to display or hide these toolbars using View > Toolbars. The Template Editor window has the following toolbars.

- Standard
- Align/Size
- Layout
- Action

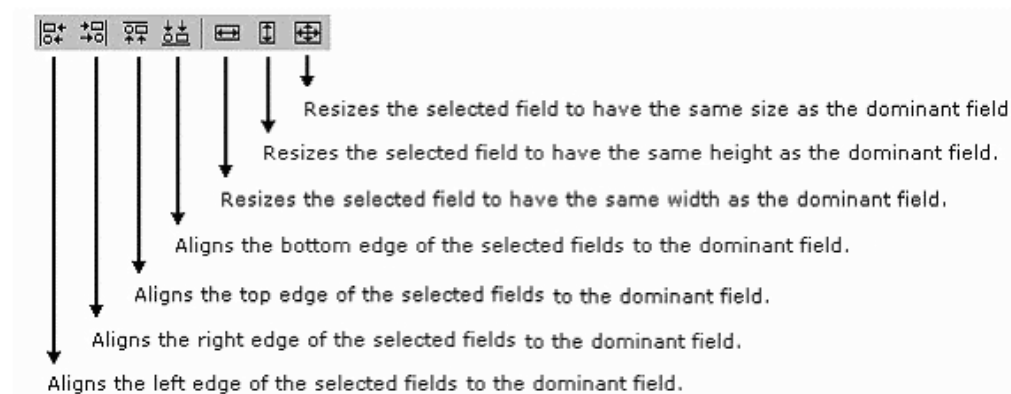
Template Editor: Standard Toolbar

To view the Standard toolbar, go to View > Toolbar > Standard.



Template Editor: Align or Size Toolbar

To view the Align or Size toolbar, go to View > Toolbar > Align/Size.



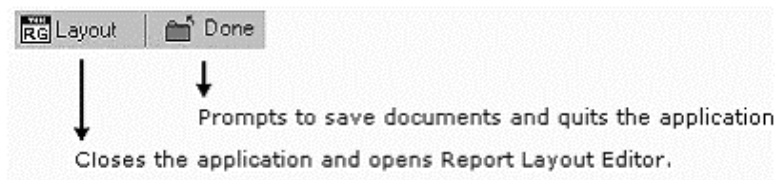
Template Editor: Layout Toolbar

To view the Layout toolbar, go to View > Toolbar > Layout.



Template Editor: Action Toolbar

To view the Action toolbar, go to View > Toolbar > Action.



The layout button also prompts you to save documents.

Template Editor: Status Bar

The Status bar displays the status of the application and tool tips for selected options.



Report Layout Editor

About the Report Layout Editor

The Report Layout Editor helps you define the layout for reports. After you create the report layout, you can reuse it to generate multiple reports.

You can use the Report Layout Editor to do the following tasks:

- Select the number of test templates per page
- Position the various templates in the report
- Create a report with up to five pages with different layout sizes
- Enter unique, easy to recognize layout names for subreports with a unique test title. This unique test title helps you to select the required template when generating a report.
- Reuse layouts in other test templates.
- Define headers and footers.

To display the Report Layout Editor, select Define Report Layout > New.

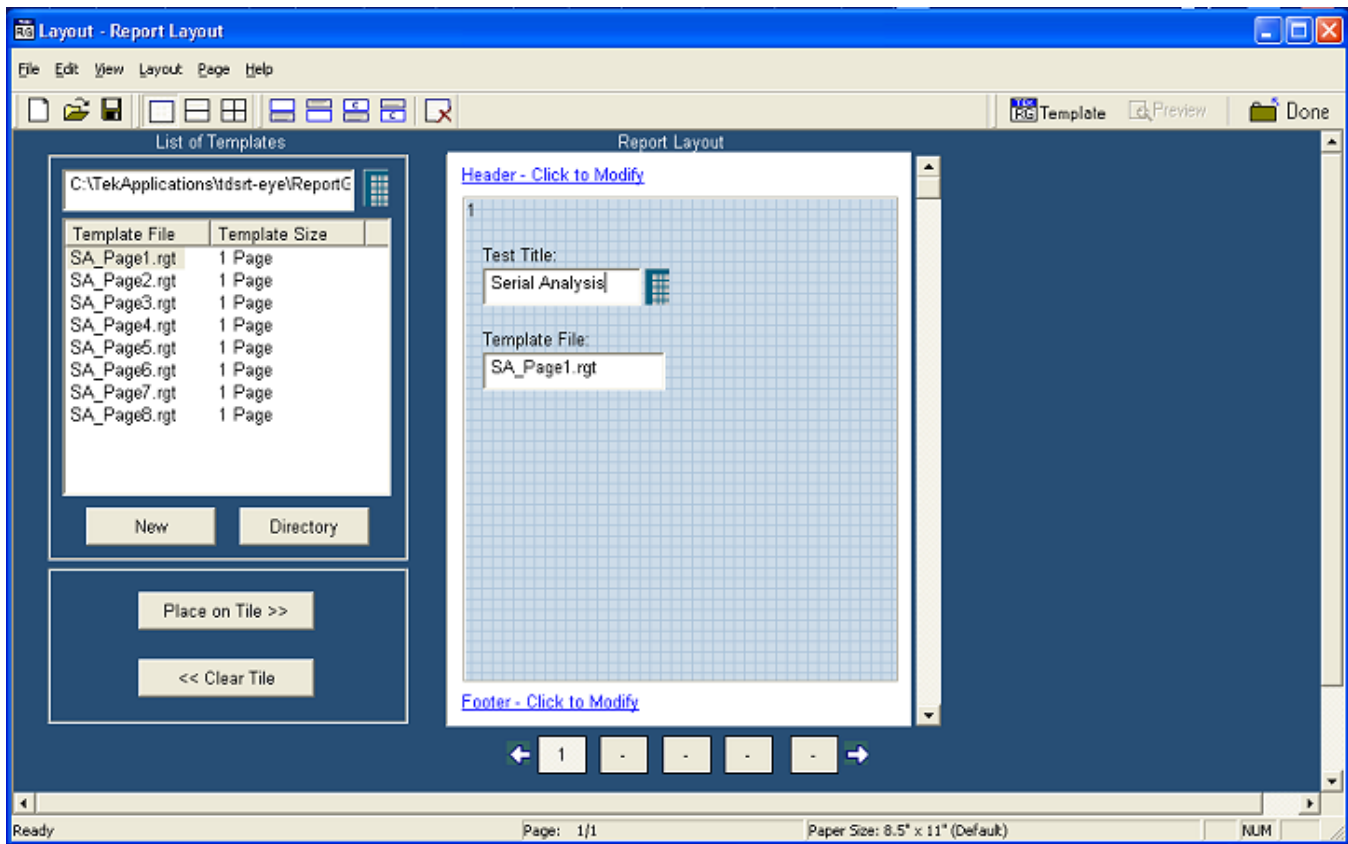


Figure 24: The Report Layout Editor

The Report Layout Editor window has two panes:

- **List of Templates:** Displays a list of templates, template sizes, template folders, and buttons that allow you to clear or place a template in a report layout tile.
 - **New:** Opens a new template.
 - **Directory:** Opens a Browse window to select the templates folder.
 - **Place on Tile:** Places the selected template on the tile.
 - **Clear Tile:** Clears the selected template from the tile.
- **Report Layout:** Displays the selected report layout and the header and the footer definition.

Report Layout Editor Window

The Report Layout Editor window contains a menu bar, a tool bar, a list of templates pane, and a report layout pane.

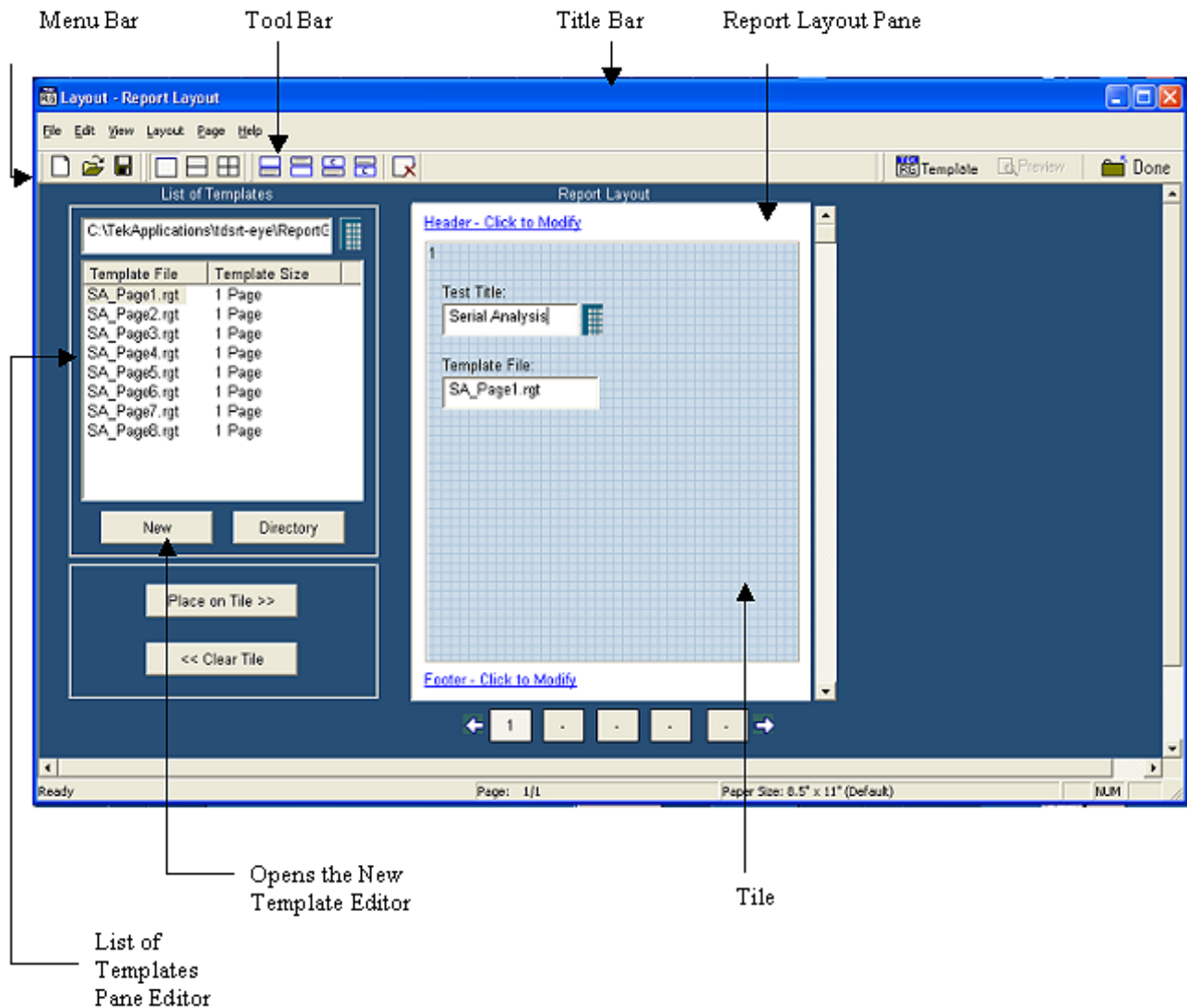


Figure 25: The Report Layout Editor window

List of Templates Pane

The List of Templates Pane displays the path of the template, templates in the folder, file names, and template sizes. You can select the template from this list and place it in the Report Layout pane.

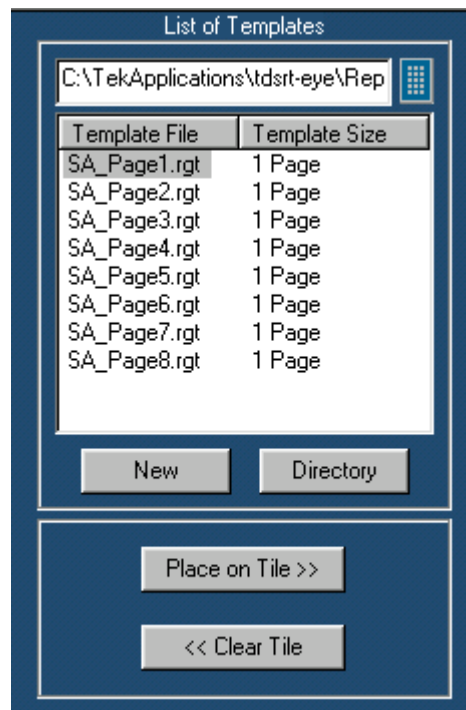


Figure 26: The List of Templates pane

In the List of Templates Pane you can do the following:

- Use the Virtual Keypad to select a different path where you have saved customized templates. Select the Directory button to display a Browse for Folder window.
- Create a new template by selecting New. The Template Editor Window is displayed, where you can create a new template.
- Drag and drop the Template File into the report layout pane's tile or select the template file and select Place on Tile >>.
- Clear the selected tile in the report layout pane by selecting << Clear Tile.

Report Layout Pane

Depending on the number of tests selected per page, the Report Layout pane appears as shown in the following figure:

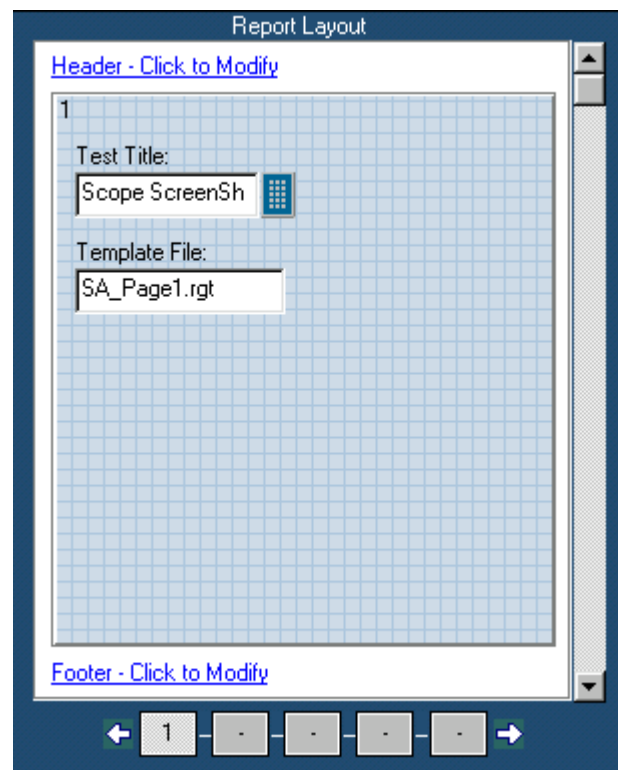


Figure 27: The Report Layout pane

In the Report Layout pane, you can do the following:

- Specify a title for each test.
- Define or modify the header and footer.
- Navigate between pages of the report layout.

Using the Report Layout Editor

To define a report layout, follow these steps:

1. Set the report layout.

Select **Layout > One Test Per Page / Two Tests Per Page / Three Tests Per Page**. The Report Layout pane displays tiles depending on the selected number of tests per page.

2. Add the templates.

3. The List of Templates pane displays the templates in the default directory — `C:\TekApplications\<Applicationname>\ReportGenerator\modules\<module name>Templates`, where "modulename" can be SerialAnalysis, InfiniBand, or PCIExpress and the <Applicationname> can be TDSPWR3, TDSHT3, TDSET3, TDSRT-Eye or DPOPWR.

- From the List of Templates pane, select, drag and drop the templates into the tiles in the Report Layout pane. You can use the Place on Tile and Clear Tile buttons to add or delete the templates.
- If you want to define a new template, select New in the List of Templates pane.
- To browse for a folder other than the default templates, select Directory to display the Browse for Folder dialog box. Navigate to the folder where you have the templates stored and select OK.

4. Define the Header and Footer.

5. Save the report layout.

- Select **File > Save** to display the Save dialog box. Enter the report layout name and select Save.
- The report layout is saved in the .rpl format.

To edit an existing report layout, follow these steps:

1. Change the report layout.

- Select **Layout > One Test Per Page / Two Tests Per Page / Three Tests Per Page**. The Report Layout pane displays tiles depending on the selected number of tests per page.
- The application displays an alert message — All the Test(s) information in the current page will be lost. Do you want to continue?

Select Yes to continue or No to stop.

2. Add or Remove the templates.
 - In the Report Layout pane, select the tile to which you want to add or remove the template.
 - To remove a template from the Report Layout, follow these steps:
 - In the List of Templates pane, select Clear Tile.
 - The application displays an alert message — The test is already filled with data. Do you want to remove it?
 - Select Yes to continue or No to stop.
 - To add a template to the Report Layout, follow these steps:
3. The List of Templates pane displays the templates in the default directory — C:\TekApplications<Applicationname>\ReportGenerator\modules\<modulename>\Templates, where "modulename" can be SerialAnalysis, InfiniBand, or PCIExpress, and the <Applicationname> can be TDSPWR3, TDSHT3, TDSET3, TDSRT-Eye or DPOPWR.
 - From the List of Templates pane, drag and drop the templates into the tiles in the Report Layout pane.
 - Select the Place on Tile button to move the template to the selected tile.
 - If you want to define a new template, select New in the List of Templates pane.
 - To browse for a folder other than the default templates, select Directory to display the Browse for Folder dialog box. Navigate to the folder where you have the templates stored and select OK.
4. Modify the Header and Footer.
5. Save the report layout.
 - Select File > Save to display the Save dialog box. Enter the report layout name and select Save.
 - The report layout is saved in the .rpl format.

Define Header and Footer

To modify the Header Definition, do the following:

1. In the Report Layout pane, select Header - Click to Modify.

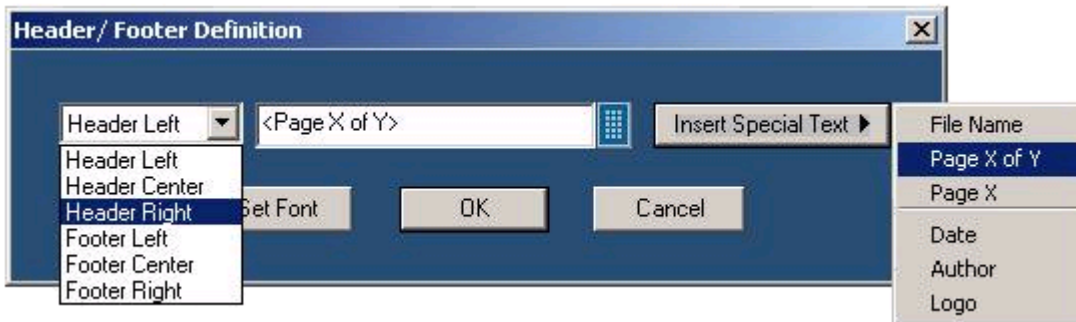



Figure 28: Defining header and footer


2. In the Header/Footer Definition dialog box, select the header position - Header Left, Header Center, or Header Right.
3. Enter the Header definition in the text box.
 - Select  to display the Virtual Keyboard. In the Virtual Keyboard, select the text and Enter.

Or

 - To insert the special text, select the Insert Special Text button to display a sub menu. Select Date, File Name, Author, Page X of Y, Page X, or Logo.
4. Select Set Font to change the font style, size, effects, color, and script for each field separately, then select OK.
5. In the Header/Footer Definition dialog box, select OK.

To modify Footer Definition, do the following:

1. In the Report Layout pane, select Footer - Click to Modify.
2. In the Header/Footer Definition dialog box, select the footer position - Footer Left, Footer Center, or Footer Right.
3. Enter the Footer definition in the text box.

Select  to display the Virtual Keyboard. In the Virtual Keyboard, select the text and select Enter.

Or

To insert the special text, select the Insert Special Text button to display a sub menu. Select Date, File Name, Author, Page X of Y, Page X, or Logo.

4. Select Set Font to change the font style, size, effects, color, and script for each field separately, then select OK.
5. In the Header/Footer Definition dialog box, select OK.

To View a Report

To display the selected report:

1. Select File > Open. The Open dialog box displays all the reports in the default directory
C:\TekApplications\<<Applicationname>\ReportGenerator\modules\<<module name>\Reports, where the "modulename" can be SerialAnalysis, InfiniBand, or PCIeExpress, and the <Applicationname> can be TDSPWR3, TDSHT3, TDSET3, TDSRT-Eye or DPOPWR.
2. Select the report that you want to view and select Open.

Change Report Layout

You can change the report layout to fit one, two or four tests per page.

Go to Layout > One Test Per Page / Two Tests Per Page / Four Tests Per Page



- ↓
Changes current template size to four tests per page.
- ↓
Changes current template size to two tests per page.
- ↓
Changes current template size to one test per page.

Insert Pages

To insert pages:

- Select Page> Insert Blank > Before Current Page / After Current Page to insert a new page before the current page or after the current page.
- Select Page> Insert Copy > Before Current Page / After Current Page to insert copy of the current page. You can insert the page, before the current page or after the current page.

Note: When you insert a copy of a page before or after the current page, the layout of the current page is the same layout as the new page.

Default Report Layout Editor Settings

Table 11: Default settings for the Report Layout Editor

Parameter	Default setting	Option
Report Size	Four tests per page	Layout
Page Size	8.5x11 inches	Page Setup
Layout Editor	One page	None
Go To	Displays the current page number in the page layout.	Edit
Font	Arial>Regular 9	None
Default Margin	Margin size on all sides of the paper is 0.8 inches.	None

Report Layout Editor: Menus

The menu bar in the Report Layout Editor window has the following menus:

- File
- Edit
- View
- Layout
- Page
- Help

Report Layout Editor: File Menu

Table 12: File menu options and their functions

Menu	Function
New	Creates a new report layout
Open	Opens a report layout file
Save	Save changes to the file
Save As	Saves the template as a different file name using the save as dialog box
Page Setup Configure page Default (8.5X11inches)	Prints all or part of the contents of the test template Configures the paper size, source, orientation, and margins using the Page Setup dialog box Configures the page setup to default — 8.5" X 11"
Layout Preview	Displays a sample view of the active report layout as it would be printed
List of Recent reports	Opens a previously (recently) opened report layouts
Exit	Closes the Report Layout Editor

Report Layout Editor: Edit Menu

Table 13: View menu options and their functions

Menu	Function
Go To	Goes to the page entered in the Go to Page dialog box

Report Layout Editor: View Menu

A (✓) appears next to the menu item selected.

Table 14: View menu options and their functions

Menu	Function
ToolBar	Displays or hides the selected toolbars such as standard, page, layout and action
Status Bar	Displays or hides the status bar
Refresh Template List	Updates the template list in the List of templates pane

Report Layout Editor: Layout Menu

A (✓) appears next to the menu item selected.

Table 15: Layout menu options and their functions

Menu	Function
One test per page	Changes the report layout to fit one test per page
Two tests per page	Changes the report layout to fit two tests per page
Four tests per page	Changes the report layout to fit four tests per page

Report Layout Editor: Page Menu

Table 16: Page menu options and their functions

Menu	Function
Insert Blank Page Before Current Page After Current Page	Inserts a blank page before the current page Inserts a blank page after the current page
Insert Copy Before Current Page After Current Page	Inserts a copy of the page before the current page Inserts a copy of the page after the current page
Delete	Deletes the current page

Report Layout Editor: Help Menu

Table 17: Help menu options and their functions

Menu	Function
Help Topics	Displays the online help
About Report Layout Editor	Displays Version and Copyright information

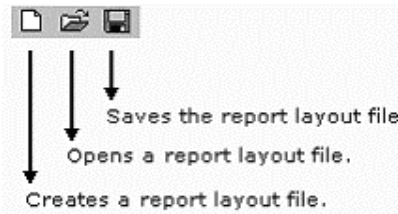
Report Layout Editor: Toolbars

You can choose whether or not to display the toolbars using View > Toolbars. The Report Layout Editor window has the following toolbars.

- Standard
- Page
- Layout
- Action

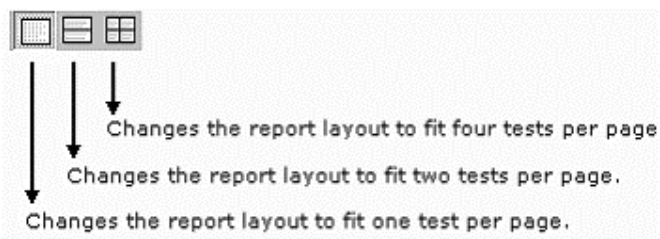
Report Layout Editor: Standard Toolbar

To view the standard toolbar go to View > Toolbars > Standard



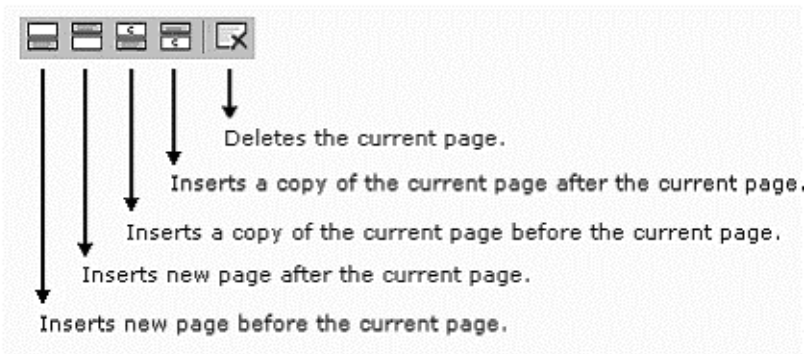
Report Layout Editor: Layout Toolbar

To view the layout toolbar go to View > Toolbars > Layout



Report Layout Editor: Page Toolbar

To view the layout toolbar go to View > Toolbars > Page



Report Layout Editor: Action Toolbar

To view the action toolbar go to View > Toolbars > Action



Status Bar

The Status bar displays the status of the application and tool tips for the selected options.

Report Layout Editor: Adding a Template to an existing report

Using the Report Layout Editor, you can add a template to an existing report. Follow these steps to add a template to the report:

1. Open a new layout using Define Report Layout.
2. Select File > Open and browse for generated reports. The report is displayed in the Report Layout pane.
3. From the standard toolbar, select Insert New Page before Current Page or Insert New Page after Current Page.
4. From the List of Templates pane, select the template that you want to add to the current page layout. Drag and drop the template file on to the report or use Place on Tile to add the template.
5. Add test titles for this layout.
6. Select File > Save to save the modified report as a .rpl or .rpt file.
7. Generate a report for the unfilled template from the .rpl or .rpt file using Generate Report.

Report Viewer

About the Report Viewer

The Report Viewer allows you to view the generated report.

Under the Generate Report tab, select Generate or View to display the Report Viewer and browse for the report that you want to generate or view.

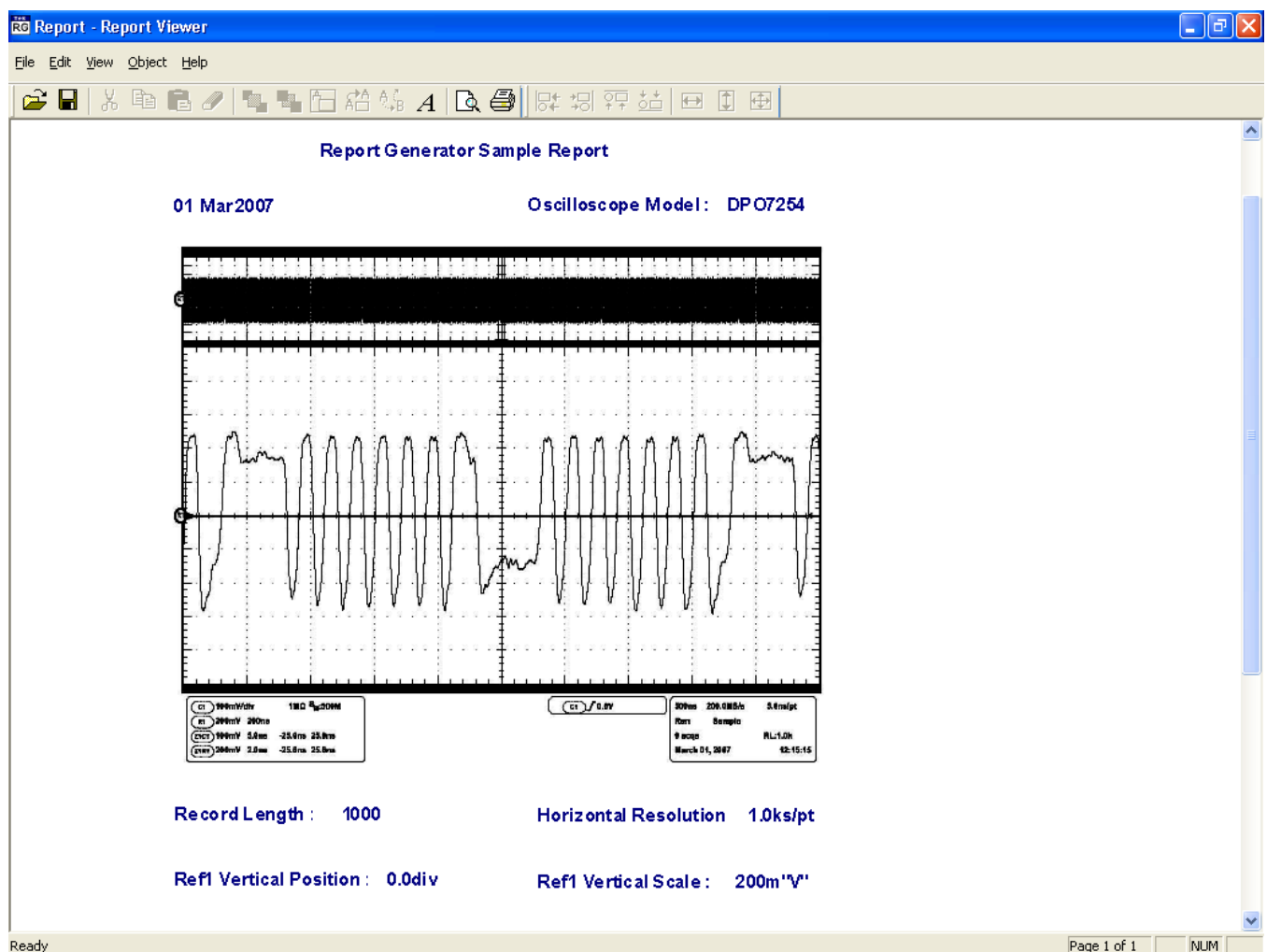


Figure 29: The Report Viewer

Report Viewer Window

The Report Viewer window comprises a menu bar, a toolbar, an align/size bar, and a client area.

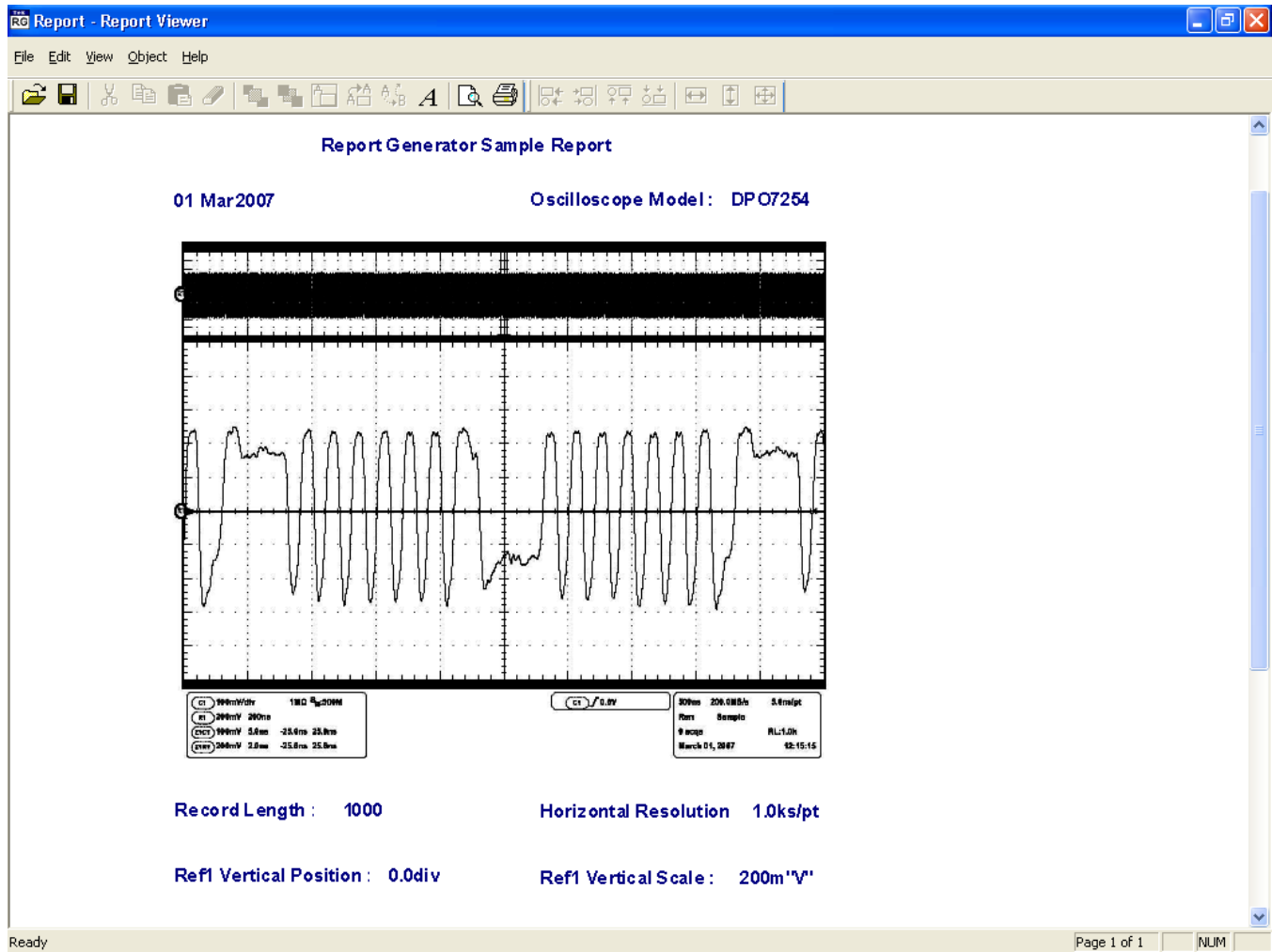


Figure 30: The Report Viewer window

Using the Report Viewer

You can select some objects and bring to front or send to back. You can show/hide text, position caption to the left, or on top. You can change font, align selected fields or make the selected fields to same size. You can also export a report as an rtf.

Select All

To cut, copy, or delete the fields from the test template, you need to select the fields. You can also select the fields from the test template by selecting CTRL+ selecting the fields.

To select all, go to Edit > Select All.

Bring to Front

You can bring the selected fields to the front. To bring to front, go to Object > Bring To Front.

Send to Back

You can send the selected fields to the back. To send to back, go to Object > Send To Back.

Show/Hide Text

You can show or hide the captions for the selected fields, go to Object > Show/Hide Text.

Configure Page

You can configure the paper size, source, orientation, and margins. To configure page, go to File > Page Setup > Configure Page.

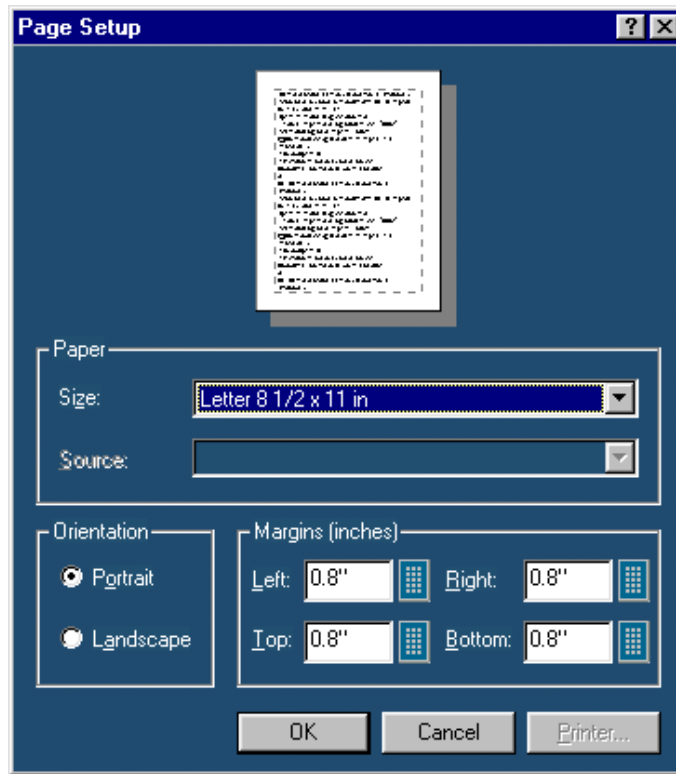



Figure 31: Page Setup dialog box

After you have configured the page setup, select OK.

Go To Page

You can go to different pages in the report layout using the Go To Page dialog box. To go to page select Edit > Go To.

1. In the Enter Page Number field, enter the page number or select  to display the Virtual Keyboard.
2. Select Go To. The Report Layout pane displays the relevant page.


Export to RTF

You can export a report generated by the Report Generator to rich text format. To export a file to rtf, go to File > Export to RTF

Note: Text and Images in the rtf file may not be completely visible. To make the text and images visible, select the text or image and resize it.


To Edit Text

Select Edit > Add Text Field. The Edit Text dialog box appears.

1. In the Text field, enter the text or select  to display the Virtual Keyboard.
2. In the Virtual Keyboard, enter the text and select Enter.
3. In the Edit Text dialog box, select OK.

To Find text

Select Edit > Find. The Find dialog box appears.

1. In the Find what field, enter the text or select  to display the Virtual Keyboard.
2. In the Virtual Keyboard, enter the text and select Enter.
3. In the Find dialog box, select Find Next until you find that text that you are searching for.

To Replace text

You can search and replace the text in the test template

1. Select Edit > Replace.

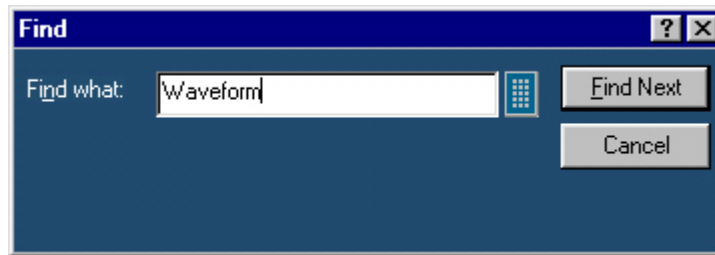


Figure 32: Finding text

2. In Replace dialog box, enter the search string using the Virtual Keyboard in the Find what field.
3. In Replace with field, using the Virtual Keyboard enter the replacement string.
4. Select Find Next until you find the required search string.
5. Select Replace to replace one instance of the string.

Or

Select Replace All to replace all instances of the string.

6. Click Cancel after you have replaced the strings.

View a report

To display the selected report:

1. Select File > Open. The Open dialog box displays all the reports in the default directory C:\TekApplications\\ReportGenerator\modules\\Reports, where the "modulename" can be SerialAnalysis, InfiniBand, or PCIExpress, and the <Applicationname> can be TDSPWR3, TDSHT3, TDSET3, TDSRT-Eye or DPOPWR.
2. Select the report that you want to view and select Open.

Align Fields

You can align the fields to top, bottom, left, or right. To align fields go to Object > Align Fields.

1. Select the fields in the test template.
2. Select Object > Align Fields > Top, Bottom, Left, or Right to align the fields accordingly.

Report Viewer: Change Font

You can change font for the selected field in the template. To change font:

1. Select the fields or fields in the test template.
2. Select Object > Change Font or right-click on the field to display the options.
3. In the Font dialog box, choose the font size, color, style, and effects.
4. Select OK.

Report Viewer: Make Same Size

You can make two or more selected fields of the same height, width, or both go to Object > Make Same Size. Select one field as the dominant field to which the other fields will be sized. Use the Ctrl key to select the fields.

1. Select the fields in the report.
2. Select Object > Make Same Size > Height, Width, or Both to make the selected fields to the same size.

Report Viewer: Menus

The menu bar has the following menus.

- File
- Edit
- View
- Object
- Help

Report Viewer: File Menu

Table 18: File menu options and their functions

Menu	Function
Open	Opens a template or report file.
Save	Save changes to the file.
Save As	Saves the template to a different file name using the Save As dialog box.
Print	Prints all or part of the contents of the report.
Print Preview	Displays a sample view of the report.
Print Setup	Prompts you to setup the printer.
Export to RTF	Exports the report in .rtf (rich text format).
List of Recent Reports	Lists the last four recently saved reports.
Exit	Closes the Report Viewer.

Report Viewer: Edit Menu

The available edit menu selections depend on whether a field is selected or not.

Table 19: Edit menu options and their functions

Menu	Function
Cut	Cuts the selected fields and places them on the clipboard.
Copy	Copies the selected fields to the clipboard.
Paste	Pastes the clipboard contents.
Delete	Deletes the selected fields.
Select All	Selects all fields.
Add Text Field	Adds a text field to the report.
Find	Finds the data matching the search criteria entered.
Replace	Replaces the data matching the search criteria with the specified data.
Go To	Goes to the page number specified in the Go To Page dialog box.

Report Viewer: View Menu

A (√) appears next to the menu item selected.

Table 20: View menu options and their functions

Menu	Function
Tool Bar	Displays/Hides the standard toolbar.
Align/Size Bar	Displays/Hides the Align/Size toolbar.
Status Bar	Displays/Hides the status bar.
Separators	Displays/Hides the separators.

Report Viewer: Object Menu

The available object menu selections depend on whether a field in the client area is selected or not.

Table 21: Object menu options and their functions

Menu	Function
Bring to Front	Brings selected fields to the front.
Send to Back	Sends the selected fields to the back.
Hide Text/Show Text	Show or hides the caption of the selected parameter.
Position Text on top/to the left	Positions the caption of the selected field to left or on top.
Edit Text	Allows you to edit the text in the selected field.
Change Font	Allows you to change the font of the selected parameter or the caption using the Change Font dialog box.
Align Fields	Aligns fields to top, bottom, left, or right.
Make Same Size	Resizes the selected objects to the same size by height, width, or both.

Report Viewer: Help Menu

Table 22: Help menu options and their functions

Menu	Function
Help Topics	Displays the online help.
About Report Viewer	Displays the Version and Copyright information.

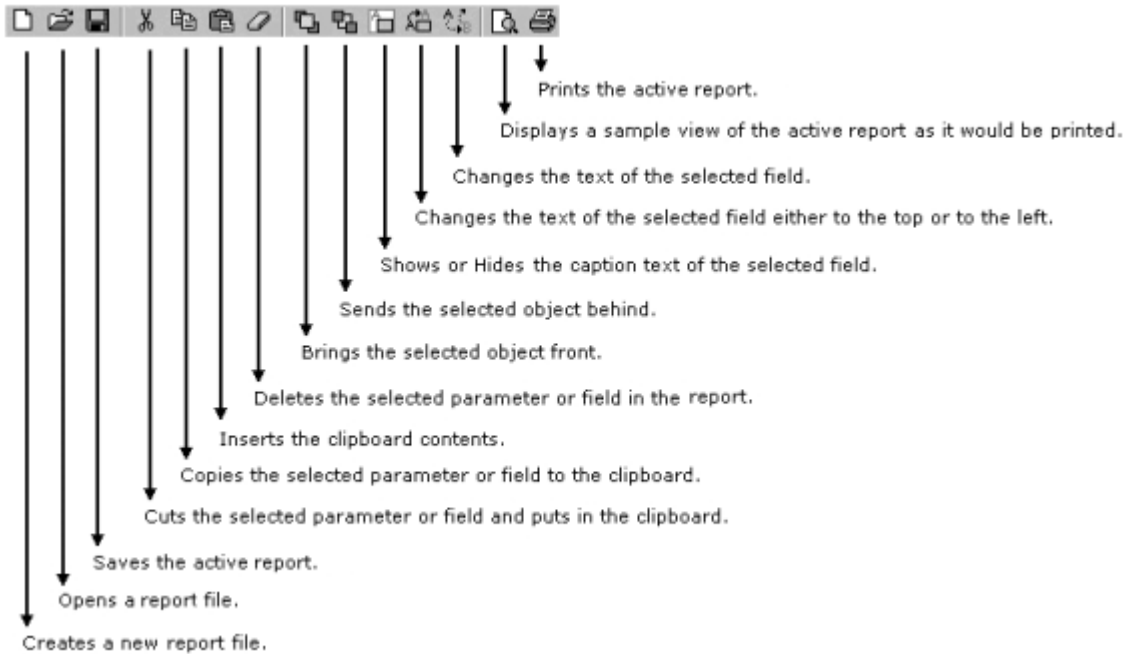
Report Viewer: Toolbars

You can choose to display or hide these toolbars using View > Toolbars. The Report Viewer has the following toolbars:

- Toolbars
- Align/Size Bar
- Status Bar
- Separators

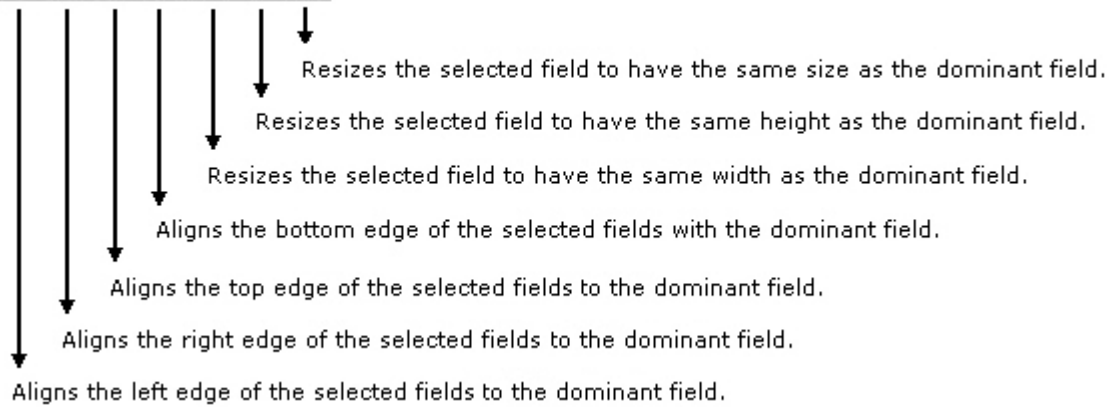
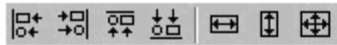
Report Viewer: Standard Toolbar

To view the standard toolbar, go to View>Toolbar.



Report Viewer: Align/Size Bar

To view the align/size bar, go to View > Toolbar.



Report Viewer: Separators

To view the separators, go to View > Separators. Shows or hides the template separators.

Report Viewer: Status Bar

The Status bar displays the status of the application and tool tips for the selected options.

Appendix

Shortcut Keys

Shortcut Keys for the Report Generator.

Table 23: Shortcut Keys

Action	Shortcut Keys
Common keys	
Open	Ctrl+O
Save	Ctrl+S
Template Editor	
New	Ctrl+N
Find	Ctrl+F
Replace	Ctrl+H
Print	Ctrl+P
Cut	Ctrl+X
Copy	Ctrl+C
Paste	Ctrl+V
Delete	Del
Select All	Ctrl+A
Bring to Front	Ctrl+Plus
Send to Back	Ctrl+Minus
Edit Text	ALT+Enter
Report Layout	
New	Ctrl+N
Go To	Ctrl+G
Refresh Template List	F5
Report Viewer	
Find	Ctrl+F
Select All	Ctrl+A
Del	Del
Bring to Front	Ctrl+Plus
Send to Back	Ctrl+Minus
Edit Text	ALT+Enter

Report Generator Error Codes

This table lists the report generator error codes and the possible solutions.

Table 24: Error codes and their descriptions

Error code	Error message	Description	Possible solution
Report Generator Interface Error Codes			
741	Some installation files are missing or corrupted, try reinstalling the application. The application will now exit.	The Application FDB File path retrieved from registry is corrupted or invalid file path.	Uninstall the application and try reinstalling.
742	Some installation files are missing or corrupted, try reinstalling the application. The application will now exit.	Application Id retrieved from registry is invalid. (<0)	Uninstall the application and try reinstalling.
743	Some installation files are missing or corrupted, try reinstalling the application. The application will now exit.	Application version is invalid.	Uninstall the application and try reinstalling.
744	Some installation files are missing or corrupted, try reinstalling the application. The application will now exit.	Not able to spawn Report Viewer.	Report Viewer executable file is missing, or there might be resource crunch if there are many applications running currently. Try closing some of the other applications. If this does not work, then uninstall and reinstall the application.
745	Internal initialization error. The application will exit now.	The Memory Map File or synchronization events for communication with RGScope are already open. The application was previously not shut down completely. Try closing RGScope.	The application was not closed completely last time. A module RGScope might be still running in the background. Try closing it.
746	Some installation files are missing or corrupted, try reinstalling the application. The application will exit now.	Not able to spawn Oscilloscope Interface.	RGScope file is missing, or there might be resource crunch if there are many applications running currently. Try closing some of the other applications. If this does not work, then uninstall and reinstall the application.
747	Some installation files are missing or corrupted, try reinstalling the application. The application will exit now.	The application FDB File read failed. The file may be read only.	Uninstall the application and try reinstalling.
748	Some installation files are	The Acc application FDB	Uninstall the application and try


	missing or corrupted, try reinstalling the application. The application will exit now.	File read failed. The file may be read only.	reinstalling.
749	Some installation files are missing or corrupted, try reinstalling the application. The application will exit now.	Not invoked by application. The application name passed by the invoking application not found in the registry.	Uninstall the application and try reinstalling.
750	Some installation files are missing or corrupted, try reinstalling the application. The application will exit now.	Not able to spawn the Report Layout Editor.	The Report Layout Editor executable file is missing, or there might be resource crunch if there are many applications running currently. Try closing some of the other applications. If this does not work, then uninstall and reinstall the application.
751	Some installation files are missing or corrupted, try reinstalling the application. The application will exit now.	Not able to spawn the Template Editor.	Template Editor executable file is missing, or there might be resource crunch if there are many applications running currently. Try closing some of the other applications. If this does not work, then uninstall and reinstall the application.
Error code	Error message	Description	Possible solution
Report Layout Editor Error Codes			
721	Some installation files are missing or corrupted, try reinstalling the application.	Not Invoked by the desired application. The application Name passed by invoking the application is not found in the registry.	Try uninstalling and reinstalling the application.
722	The selected file is not a valid layout for this application.	The layout belongs to some other application.	The layout file being opened belongs to an older application. It is not possible to open a file belonging to another application.
723	Layout file is not valid for the current version of the Application.	The layout was created for some other version of the application.	The opened layout file belongs to a different version of the same application. It is not possible to open a file belonging to another version.

Error code	Error message	Description	Possible solution
Template Editor Error Codes			
761	Error in Initialization of Application.	The DLLs and application executables are not properly installed.	Try uninstalling and reinstalling the application.
762	Error!! : Invalid Application Name.	Registry Entries are not appropriate.	Try uninstalling and reinstalling the application.
763	Error!! The Selected file is not a valid template for this application.	The template belongs to some other application.	The opened template file belongs to a different version of the same application. It is not possible to open a file belonging to another version.
764	Error !!: Template file is not valid for the current version of the Application.	The template was created for some other version of the application.	The opened template file belongs to a different version of the same application. It is not possible to open a file belonging to another version.
765	A Group with the specified name already exists.	User tried to create a custom group with the same name as an existing group.	Try using a different name than the existing groups.
Error code	Error message	Description	Possible solution
Oscilloscope Interface Error Codes			
781	The MFC DLLs are not properly installed.	The MFC DLLs are not properly installed.	Reinstall the application.
782	The system resources required for communication are already open.	The system resources required for communication are already open.	Close all application related executables and try again.
783	RGScope.exe is already running on the system.	Illegal memory access.	Close RGScope and restart the application.
784	Illegal memory access.	Illegal memory access.	Close the application and restart.
785	An unknown exception occurred in the application.	An unknown exception occurred in the application.	Close the application and restart.
786	Exception occurred while accessing a file	Exception occurred while accessing a file.	Close the application and restart.
787	The application was not able to acquire windows resources such as GDI objects.	The application was not able to acquire Windows resources such as GDI objects.	Close the application and restart.
788	The application was not able to connect to the oscilloscope. Make sure the TekScope.exe is running.	The application was not able to connect to the oscilloscope. Make sure the TekScope.exe is running.	If this does not solve the problem reinstall the application.
789	The required registry key doesn't exist or an error occurred while getting its value.	The required registry key doesn't exist or an error occurred while getting its value.	Close the application and restart. If this does not solve the problem reinstall the application.
790	The FDB file doesn't exist or	The FDB file doesn't exist	Make sure the FDB file is present

	it may be read-only.	or it may be read-only.	and not read-only. If this does not solve the problem reinstall the application.
791	Oscilloscope interface received an invalid message from RG interface.	Oscilloscope interface received an invalid message from RG interface.	Close the application and restart.
792	Error in getting memory from the system	Error in getting memory from the system.	Quit one or more applications running on the system and restart RGAApp.
793	Error in creating the jpeg file.	Error in creating the jpeg file.	Make sure the "temp" folder exists and there is space on the hard disk drive.
Error code	Error message	Description	Possible solution
Message boxes and dialog boxes in the user interface			
701	Error Initializing Report Generator.	System resources can't be allocated Try closing some of the other applications.	If this does not work, then uninstall and reinstall the application.
702	No valid file name was provided.	This happens when no filename is selected in Application for generating a report.	Select a valid file.
703	<Path of the file selected>. The template file name is invalid.	The reading of the template file fails. This will happen if the application fails to read the rgt file.	Select another valid template file.
704	<filename> is not a valid Report Layout.	An invalid report layout was provided. This happens if the application fails to read the layout file.	Select another valid layout file.
705	<filename> is not a valid Report Layout file for the Application.	The layout is not valid for the application. This means that the file was read properly but the application and version for the rpl file don't match the application.	Select another valid layout file for the application.
706	Invalid Report file specified.	A file other than the Report Generator file(s) is selected with the extension (rpt rgt rpl) used by Report Generator files.	Select another valid file.
707	Invalid File Format.	Other file types such as text are selected.	Select another valid file.
708	<filename> is not a valid	The application name and	Select another valid report file for

	report file for <AppName> .	version for the report file do not match that of application.	that application.
709	Unable to read the Report file.	An exception occurs for a rpt file. This happens if the application cannot read the report .rpt file.	Select another valid report file for that application.

Virtual Keyboard

Selecting  displays the Virtual Keyboard similar to the keyboard. The field on the top displays what you have selected. After you have selected the required content, select Enter.



Index

A

About Report Generator	3
About Report Layout Editor	15
About Report Viewer	21
About Template Editor	9
About the Report Layout Editor	15
About the Template Editor	9
Application Directories and File Names	4

C

Copyright and Version Information	1
Create or edit a test template	5

D

Default Settings for Report Layout Editor	18
Default Settings for the Template Editor	12
Define or edit a report layout	6
Definitions of the User Interface Items	3

F

File Name Extensions	4
----------------------	---

G

Generate Print or view a report	7
---------------------------------	---

P

Palette List	12
--------------	----

R

Report Generator Error Codes	25
Report Layout Editor Adding a Template	18
Report Layout Editor Menus	18
Report Layout Editor Toolbars	18
Report Layout Editor Window	16
Report Viewer Menus	22
Report Viewer Toolbars	23
Report Viewer Window	21

S

Shortcut Keys	25
Starting the Report Generator	3
Steps to set up Report Generation	3

T

Template Editor Menus	13
Template Editor Menus	13
Template Editor Toolbars	13
Template Editor Window	10

U

Using Report Layout Editor	16
Using Report Viewer	22
Using Template Editor	11
Using the Template Editor	11

W

Welcome	3
---------	---